



R

RIPERLAMP

WE LIGHT UP YOUR IDEAS

Beginnings

C L A S S I C L I N E C A T A L O G U E

MADE IN SPAIN SINCE 1985



02



Beginnings



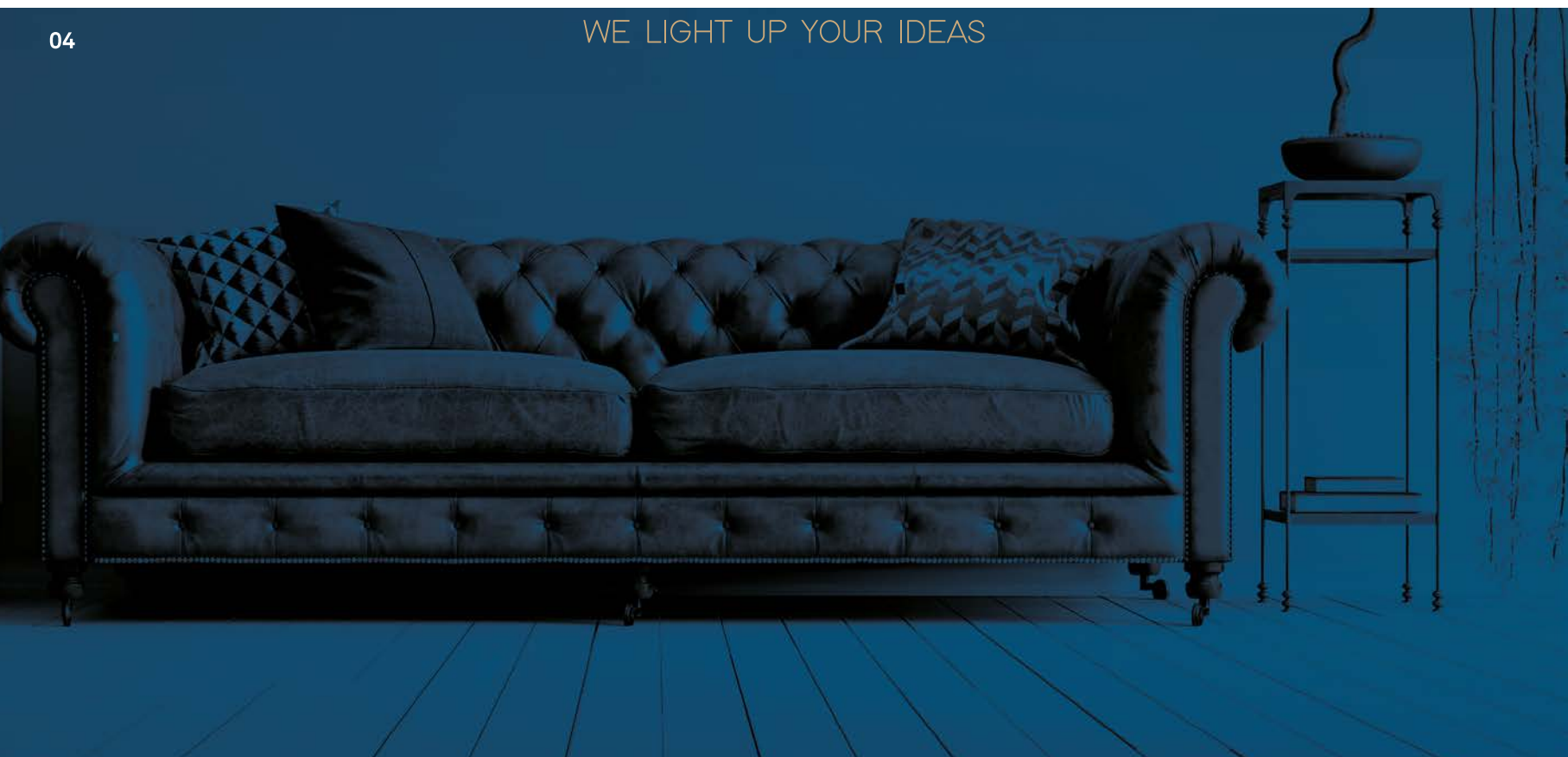


R

RIPERLAMP

WE LIGHT UP YOUR IDEAS

04





Ya que todo el proceso de producción se realiza en nuestras instalaciones de más de 13.000 m² en Valencia, podemos ofrecer plazos de entrega más ajustados, así como una elevada calidad. Además, gracias a los exclusivos toques de acabado que aplicamos a los productos, somos capaces de aportar una personalidad única a las piezas.

El estudio de diseño de RIPERLAMP colabora con artesanos para dar vida a diseños innovadores. Por lo tanto, contar con artesanos se convierte en una obligación para proveer de soluciones a los desafíos de diseño. Con la finalidad de crear piezas únicas, usamos tanto técnicas tradicionales como nuevas tecnologías.

05

As the whole production and design process takes place in our facilities of over 13.000 square meters in Valencia, we are able to offer short delivery times as well as a high-quality standard. Moreover, thanks to the exclusive finishing touches that are applied to the products, we are able to give a unique personality to the pieces we create.

Riperlamp's design studio collaborates with craftsmen in order to bring to life innovative designs. Therefore, partnering with artisans becomes a must for providing solutions to the design challenges that face them. In order to create unique pieces, we use both traditional techniques and new technologies.

ПРОИЗВОДСТВЕННЫЙ ПРОЦЕСС:

Riperlamp базируется на производстве люксового освещения, потому что для нас роскошь основана на объединении исключительной команды дизайнеров, которые могут создавать уникальные интерьеры на основе своих идей. Используемое сырье высшего качества. Работа с прицелом на авангард с учетом процесса технического ремесла и с командой выдающихся ювелиров, способных создавать уникальные изделия с безупречной отделкой. Весь процесс (дизайн продукта, моделирование, плавка, нанесение отделки, обработка, сборка и оформление) полностью осуществляется в Испании.



WE LIGHT UP YOUR IDEAS

Tras más de 30 años desde el nacimiento de RIPERLAMP, presentamos nuestra nueva identidad corporativa, con una imagen renovada con la que transmitimos la frescura y elegancia necesaria para diseñar nuevas creaciones y piezas, alineadas con las tendencias en iluminación decorativa.

Evolucionamos internamente y también de forma externa, el nuevo logo refleja la transformación que está experimentando la empresa, así como lo que queremos conseguir.

Inspirado en las suaves olas del Mar Mediterráneo, anunciamos un azul renovado. Posicionándonos como una empresa identificada con la cultura y forma de vida Mediterránea.

El icono combina tanto un estilo artístico como arquitectónico. Por una parte, el estilo arquitectónico se caracteriza por formas rectas y estructuras sólidas, que se pueden percibir en la L del icono. Por la otra parte, curvas y formas orgánicas se hacen evidentes en el trazo libre de la R.

Nuestro nuevo slogan "We light up your ideas" es una clara declaración de intenciones. Queremos declarar las capacidades que tenemos para satisfacer todas las necesidades en el mercado, y lo que podemos conseguir. Esto se debe a que en RIPERLAMP, diseñamos y fabricamos todos nuestros proyectos de iluminación a medida desde el inicio, hechos a mano en nuestras instalaciones de Valencia.

QUÉ hacemos:

Diseñamos y fabricamos soluciones de iluminación y mueble.

PARA QUÉ lo hacemos:

Para ayudarte a crear ideas y espacios únicos.

CÓMO lo hacemos:

- Con un proceso de producción 100% integrado.
- Con un departamento de diseño propio.
- Con un servicio integral de producto a medida.
- Con un equipo profesional orientado al cliente.

06

After more than 30 since the establishment of RIPERLAMP we introduce our new corporate identity, an updated image with which we transmit the freshness and elegance needed to design new creations and pieces, aligned with the trends of decorative lighting.

We are evolving internally and so we do it externally, the new logo reflects the transformation that the company is going through, as well as what we want to achieve.

Inspired by the mellow and pleasant waves of the Mediterranean Sea, we announce a renewed blue. Positioning ourselves as a company identified with the culture and Mediterranean way of life.

The icon combines both an architectural and artistic style. On one hand, the architectural style is characterized by straight lines and solid structures, perceptible in the L of the icon. On the other hand, curves and organic shapes, main characteristics of artistic styles, are evident in the free stroke of the R.

Our new slogan "We light up your ideas" is an open statement of intentions. We want to declare the capabilities that we have to satisfy all the needs in the market, and what we can achieve. Which is achieved due to the fact that in RIPERLAMP, we design and manufacture all of our lighting projects from scratch, handcrafted in our facilities located in Valencia.

What we do

Design and produce lighting and furniture solutions.

Why we do it

To help you create ideas and unique spaces.

How we do it

- With a 100% integrated production process.
- Thanks to an integrated design department.
- With a comprehended service of tailor-made product.
- Thanks to a customer-oriented professional team.



После более чем 30-летней работы, компания RIPERLAMP представляет свой новый фирменный стиль, обновленный образ, с которым передает свежесть и элегантность, необходимые для разработки новых произведений и изделий, в соответствии с тенденциями декоративного освещения.

Внутренние изменения отразились и внешним образом, новый логотип передаёт трансформацию, которую делает компания, а также намерение, с которым мы проектируем будущее.

Благодаря нашему новому образу, мы представим себя миру в обновленном синем цвете, в котором можно почувствовать ясное вдохновение мягких волн Средиземного моря, а также цвет его теплых вод. Позиционирование себя на рынке как компании, отождествленной с культурой и философией средиземноморской жизни, в частности с Валенсией, место, где зародилась и развивалась компания, которая в настоящее время насчитывает более 200 сотрудников нашего кооператива.

Имаготип сочетает в себе как архитектурный, так и художественный стиль. С одной стороны, архитектурный стиль характеризуется прямыми линиями и сплошными структурами, присутствующими в L изображения. С другой стороны, с изогнутыми и органическими формами, основными характеристиками художественных стилей, заметными в свободном ударе R.

что мы делаем

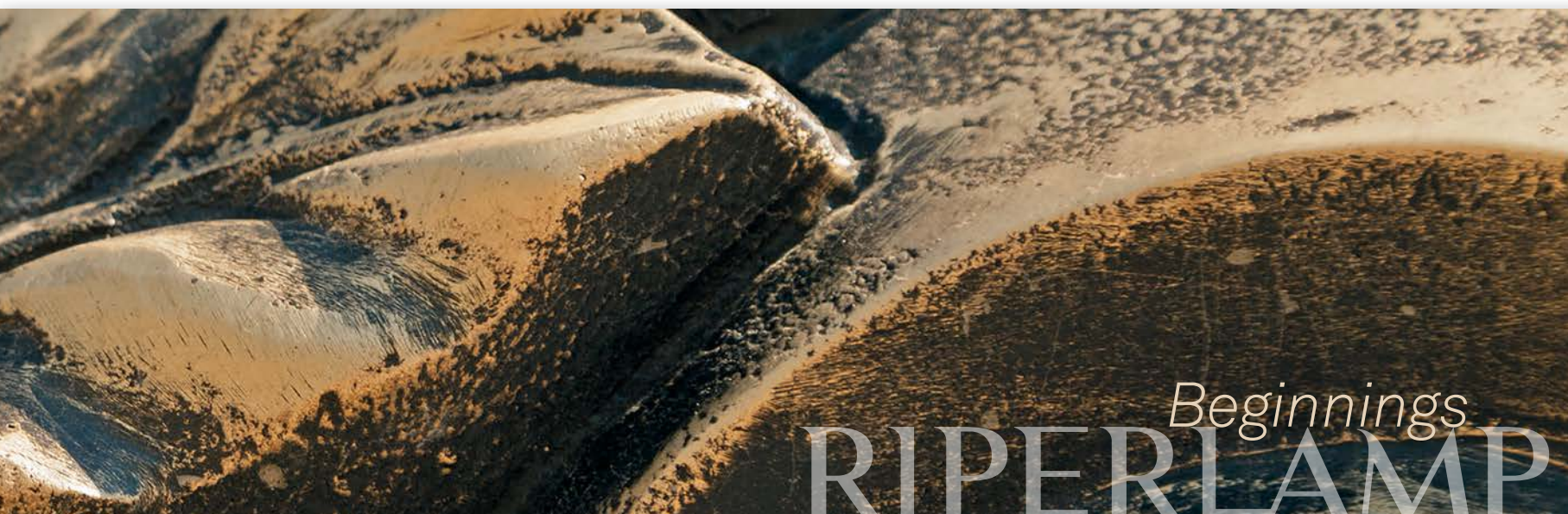
Разработка и производство световых и мебельных решений.

почему мы это делаем

Чтобы помочь вам создавать идеи и уникальные пространства.

как мы это делаем

- Со 100% интегрированным производственным процессом.
- Благодаря интегрированному отделу дизайна.
- С осознанным обслуживанием по индивидуальному заказу.
- Благодаря ориентированной на клиента профессиональной команде.





08

MATERIALS

Inspirado en las bellas artes, las ideas cobran vida, mediante el uso de los materiales nobles y más exclusivos, convergen en diseños únicos. Nuestros modelos se crean mediante la delicadeza de nuestros artesanos, transformando habitaciones en espacios particulares que crean mágicos bailes de luces y sombras donde los elementos como el latón, cristal, madera y alabastro se entrelazan con el algodón y la seda.

Inspired by the fine arts ideas come to life, which through the use of the finest and most exclusive materials converge into unique designs. Our models are created through the delicacy of our craftsmen and artisans, transforming rooms into particular spaces that create magical dances of lights and shadows where elements such as brass, bronze, wood, alabaster weave together with the cotton and silk.

Вдохновленные изобразительным искусством, идеи воплощаются в жизнь из самых благородных и высококачественных материалов, которые объединяются в эксклюзивном дизайне. Наши модели создаются благодаря деликатности рук наших художников и мастеров, превращая помещения в уникальные места, создавая танцы света и тени, с такими элементами как; бронза, дерево, алабастро, хлопок и шелк.

GLOSSARY

- Todos los modelos están protegidos con un barniz especial, resistente a la humedad y que garantiza la durabilidad de las decoraciones.
- Los modelos se sirven completamente electrificados de acuerdo con las normas vigentes en el país de destino. No incluyen bombillas.
- Se proporciona una cadena de mínimo 35 cms con los modelos que parecen fotografiados con ella.
- Los modelos de exterior se ofrecen con un grado de protección IP65.
- Las medidas de las sobremesas con pantalla, tienen en cuenta la correspondiente pantalla.
- Para realizar cualquier modelo a medida contactar con: export@riperlamp.com
- Para visualizar más modelos visitar: riperlamp.com
- Leyenda:
- All models are protected with a special varnish, resistant to humidity, which guarantees the durability of the pieces.
- All models are completely electrified according to the regulations in the country of destination. Lightbulbs are not included.
- Minimum 35 cm of chain is provided with the products which show it in the picture.
- Outdoor products are offered with an IP65 protection degree.
- Measures of the table lamps with lampshades take into account the lampshade.
- For custom products contact: export@riperlamp.com
- In order to find more models, visit: riperlamp.com
- Key:
- Все модели защищены специальным лаком, устойчивым к влаге и гарантирующим долговечность отделки металла.
- Модели полностью электрифицированы в соответствии с действующими в стране нормативами. Лампочки не включены, кроме встроенных светильников и подсветок для картин.
- Для подвесных светильников, которые сфотографированы с цепью, предусмотрена длина цепи не менее 35 см.
- Уличные модели предлагаются со степенью защиты IP65
- Размеры настольных ламп указаны уже с абажуром
- История:

Dec.

Decoración que se muestra en la fotografía.

Decoration shown in the picture.

Отделка как на фотографии.

**Número de luces.**

Number of lights.

Количество ламп.

**Potencia de la bombilla.**

Power of the lightbulb.

Мощность лампочки.

**Diámetro entre las partes más distintas del modelo, en centímetros.**

Diameter in centimetres between the more distant parts of the model.

Диаметр между самыми разными частями модели, в сантиметрах.

**Altura en centímetros desde el asa de la columna hasta la pieza final inferior, excepto aquellos modelos en los que se indica otra cosa.**

Height in centimetres from the loop of the column until the final lower piece.

Высота в сантиметрах от верхнего крепёжного кольца до нижнего наконечника, исключая те модели, у которых другие данные.

**Profundidad del modelo en centímetros.**

Depth of the product in centimetres.

Глубина в сантиметрах.

Kg

Peso del producto en kilogramos brutos.

Gross weight of the product in kilograms.

Вес нетто в кг.

FINISHES

Los acabados proporcionan a las piezas que producimos un carácter único. Es gracias a este proceso que cada pieza es completamente única y especial.

Finishes are what provides to the pieces that we produce, a unique character. Thanks to this process, every piece is completely special and different to the previous ones.

Отделка обеспечивает уникальный характер изделиям, которые мы производим. Благодаря этому процессу каждый предмет совершенно индивидуальный и отличается от предыдущих.

R DECORATIONS



AA - OLD GOLD



AB - ENGLISH PATINA



AM - FRENCH GOLD, WHITE PATINA



AA - OLD GOLD



AB - ENGLISH PATINA



AM - FRENCH GOLD, WHITE PATINA



AY - POLISHED LEATHER



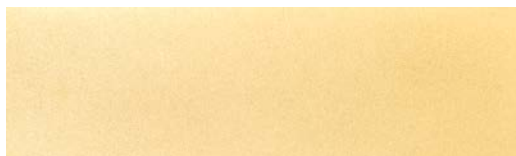
BO - SANDED GOLD PLATED



BR - ROSÉ



AY - POLISHED LEATHER



BO - SANDED GOLD PLATED



BR - ROSÉ

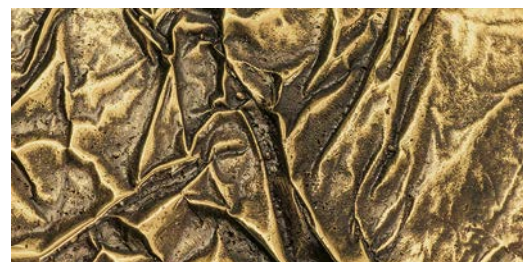
10



CQ - BRIGHT NICKEL



CX - OXID SILVER



EA - PAVON



CQ - BRIGHT NICKEL



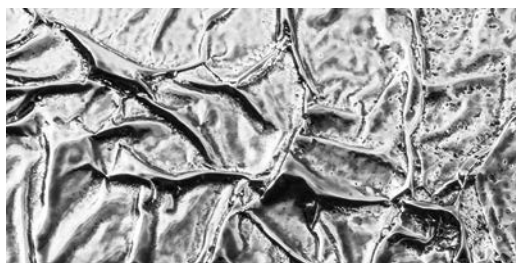
CX - OXID SILVER



EA - PAVON



BJ - TOFFEE



DJ - GRAPHITE



EH - CREVAL BRIGHT GOLDEN



BJ - TOFFEE



DJ - GRAPHITE



EH - CREVAL BRIGHT GOLDEN



AO - GOLD PLATED



AQ - FRENCH GOLD



AO - GOLD PLATED



AQ - FRENCH GOLD



CA - GOLD PLATED WHITE PATINA



CJ - RETOUCHE LEATHER



CA - GOLD PLATED WHITE PATINA



CJ - RETOUCHE LEATHER



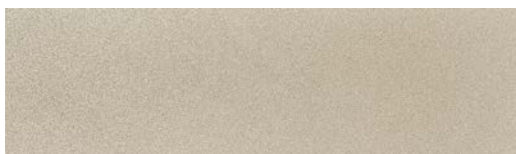
JA - BRIGHT POLISHED BROWN PATINA



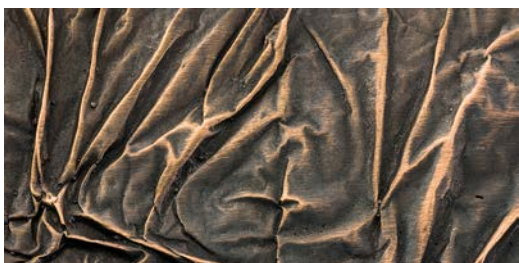
JB - SANDED BRIGHT NICKEL PLATED



JA - BRIGHT POLISHED BROWN PATINA



JB - SANDED BRIGHT NICKEL PLATED



LX - RUSTED COPPER



DH - CHROME



LX - RUSTED COPPER



DH - CHROME



Index & references/page



| | |
|--|-----|
| Collection | 14 |
| Recessed Lights | 182 |
| Pendants | 190 |
| Laterns | 192 |
| Flushed Lights | 198 |
| Wall Lamps | 200 |
| Table Lamps | 201 |
| Furniture & Mechanisms | 210 |
| Furniture for Hotels | 230 |
| Mechanisms | 232 |
| Technical Data | 234 |
| Outdoor | 244 |
| Projects | 252 |
| Custom Products | 254 |
| Previous Projects | 286 |
| Riperlamp's Excellence | 294 |
| Custom Service | 298 |
| Riperlamp Design Department | 300 |
| Technology integration in smart design | 302 |
| Hoist | 312 |
| New website | 318 |

| | | | | | | | | | | | |
|------|---------|------|-----|------|-----|------|-----|------|-----|------|---------|
| 003A | 16/17 | 020A | 147 | 043B | 185 | 051F | 40 | 063Z | 186 | 225Y | 123 |
| 003B | 16 | 020B | 146 | 043C | 183 | 051H | 40 | 068E | 138 | 231A | 140/141 |
| 003C | 18 | 020C | 149 | 043D | 184 | 051J | 40 | 068G | 138 | 231E | 140 |
| 003D | 19 | 020D | 148 | 043E | 185 | 051N | 40 | 068H | 139 | 231H | 140 |
| 003E | 268/269 | 020H | 148 | 043H | 187 | 051P | 41 | 068J | 139 | 231N | 141 |
| 003N | 18 | 020J | 148 | 043J | 187 | 055H | 198 | 068K | 139 | 231R | 140 |
| 003R | 16 | 020N | 148 | 043K | 187 | 055J | 198 | 068M | 139 | 231Y | 140 |
| 003Y | 16 | 020P | 146 | 043L | 187 | 055K | 198 | 068N | 138 | 244A | 164 |
| 007A | 78 | 020R | 148 | 043M | 183 | 056B | 108 | 068P | 138 | 244B | 164 |
| 007B | 79 | 020S | 146 | 043N | 184 | 056C | 110 | 068Q | 139 | 244C | 165 |
| 007N | 79 | 030A | 202 | 043P | 185 | 056D | 111 | 068V | 139 | 244N | 164 |
| 007R | 79 | 030B | 202 | 043Q | 183 | 056G | 109 | 069A | 233 | 244Y | 164 |
| 007Y | 79 | 030C | 202 | 043R | 185 | 056N | 110 | 069B | 233 | 248A | 69 |
| 009A | 92 | 030D | 202 | 043S | 183 | 056R | 108 | 069C | 233 | 248B | 69 |
| 009B | 93 | 030E | 202 | 043T | 183 | 056Y | 108 | 070A | 232 | 248C | 68 |
| 009N | 93 | 030F | 202 | 043V | 185 | 059A | 128 | 070B | 232 | 248D | 67 |
| 009R | 93 | 030G | 202 | 043W | 185 | 059B | 128 | 070C | 232 | 248N | 69 |
| 009Y | 93 | 030H | 202 | 043X | 184 | 059C | 126 | 074N | 204 | 248P | 69 |
| 010A | 22 | 031A | 200 | 043Y | 187 | 059D | 127 | 074P | 204 | 248R | 66 |
| 010B | 22 | 031B | 200 | 043Z | 187 | 059G | 129 | 074Q | 204 | 248Y | 66 |
| 010G | 23 | 031C | 200 | 047A | 20 | 059N | 126 | 077M | 203 | 253A | 65 |
| 010N | 22 | 031D | 200 | 047B | 21 | 059R | 126 | 077N | 203 | 253B | 64 |
| 010R | 22 | 031E | 200 | 047N | 20 | 059Y | 126 | 077P | 203 | 253N | 64 |
| 012N | 208 | 031F | 200 | 047R | 20 | 062A | 186 | 201A | 81 | 253P | 64 |
| 012Q | 208 | 031G | 200 | 048A | 103 | 062B | 189 | 201B | 80 | 253R | 64 |
| 013N | 206 | 031H | 200 | 048N | 102 | 062C | 189 | 201N | 81 | 253S | 64 |
| 013P | 207 | 031R | 201 | 048R | 102 | 062D | 189 | 201P | 81 | 253Y | 64 |
| 014P | 206 | 031S | 201 | 049E | 151 | 062M | 186 | 201R | 80 | 259A | 131 |
| 015N | 205 | 032E | 200 | 049F | 151 | 062N | 189 | 201S | 80 | 259B | 131 |
| 015Q | 205 | 032F | 200 | 049N | 150 | 062P | 189 | 201Y | 80 | 259D | 130 |
| 016K | 199 | 032G | 200 | 049R | 150 | 062Q | 189 | 202A | 125 | 259G | 131 |
| 017A | 143 | 032P | 200 | 050J | 198 | 062R | 186 | 202N | 124 | 259N | 130 |
| 017B | 142 | 040N | 205 | 051A | 41 | 062S | 189 | 202P | 124 | 259P | 130 |
| 017C | 142 | 040P | 205 | 051B | 41 | 062T | 189 | 202R | 124 | 259R | 130 |
| 017N | 142 | 043A | 183 | 051E | 40 | 062V | 189 | 202Y | 124 | 264A | 132 |
| | | | | | | 063A | 184 | 203A | 105 | 264B | 133 |
| | | | | | | 063B | 188 | 203B | 105 | 264N | 132 |
| | | | | | | 063C | 188 | 203E | 104 | 264R | 132 |
| | | | | | | 063D | 184 | 203F | 104 | 274A | 86 |
| | | | | | | 063E | 188 | 203H | 104 | 274B | 86 |
| | | | | | | 063F | 188 | 203N | 105 | 274F | 86 |
| | | | | | | 063G | 186 | 203R | 104 | 274N | 86 |
| | | | | | | 063H | 188 | 203Y | 104 | 277B | 87 |
| | | | | | | 063J | 188 | 209A | 193 | 277C | 87 |
| | | | | | | 063M | 184 | 209B | 193 | 277N | 87 |
| | | | | | | 063N | 184 | 209C | 193 | 277P | 87 |
| | | | | | | 063P | 188 | 210E | 192 | 327A | 32 |
| | | | | | | 063Q | 188 | 211D | 192 | 327B | 35 |
| | | | | | | 063R | 186 | 225A | 122 | 327C | 33 |
| | | | | | | 063S | 184 | 225E | 123 | 327D | 32 |
| | | | | | | 063T | 184 | 225H | 123 | 327E | 263 |
| | | | | | | 063V | 188 | 225J | 123 | 327N | 34 |
| | | | | | | 063W | 188 | 225N | 122 | 327P | 34 |
| | | | | | | 063X | 188 | 225P | 122 | 327R | 34 |
| | | | | | | 063Y | 188 | 225R | 123 | 327S | 34 |



| | | | | | | | | | | | |
|-------------|-----|-------------|--------|-------------|-----|-------------|---------|-------------|---------|-------------|---------|
| 353N | 209 | 371Y | 26 | 386K | 63 | 394R | 171 | 710T | 154 | 748H | 58 |
| 353P | 209 | 372A | 144 | 386N | 63 | 394Y | 171 | 710Y | 152 | 748N | 56 |
| 354A | 53 | 372E | 145 | 386R | 60 | 538A | 274 | 714A | 191 | 748R | 56 |
| 354B | 55 | 372N | 145 | 387A | 77 | 538N | 274 | 714D | 190 | 751A | 96 |
| 354C | 52 | 372R | 145 | 387B | 76 | 539A | 271 | 714G | 190 | 751B | 95 |
| 354D | 54 | 372S | 145 | 387C | 75 | 539N | 271 | 720A | 194 | 751C | 96 |
| 354E | 52 | 372Y | 145 | 387D | 262 | 540A | 270 | 720B | 194 | 751D | 94 |
| 354F | 54 | 375A | 107 | 387N | 74 | 540N | 270 | 720C | 195 | 751E | 97 |
| 354G | 52 | 375B | 107 | 387R | 74 | 548A | 279 | 722A | 196 | 751F | 97 |
| 354H | 52 | 375E | 106 | 389A | 168 | 555A | 273 | 722B | 197 | 751N | 94 |
| 354J | 54 | 375F | 106 | 389B | 166 | 555N | 273 | 722C | 197 | 752A | 83 |
| 354K | 52 | 375H | 106 | 389C | 167 | 556A | 276 | 722D | 197 | 752E | 82 |
| 354M | 55 | 375J | 106 | 389N | 169 | 556D | 275 | 722Q | 197 | 752H | 85 |
| 354P | 54 | 375N | 106 | 389P | 169 | 556N | 277 | 723A | 120 | 752K | 82 |
| 354R | 53 | 375P | 106 | 389R | 169 | 556P | 277 | 723B | 119 | 752N | 84 |
| 354Y | 54 | 375R | 106 | 389Y | 169 | 556V | 277 | 723C | 120 | 752R | 84 |
| 368A | 47 | 375Y | 106 | 390A | 113 | 559C | 266 | 723E | 121 | 752S | 84 |
| 368B | 46 | 378E | 50 | 390C | 113 | 559C | 267 | 723G | 121 | 754N | 38 |
| 368E | 48 | 378F | 50 | 390N | 112 | 560B | 264 | 723J | 121 | 812A | 219 |
| 368H | 48 | 378H | 51 | 390Q | 112 | 560D | 265 | 723N | 118/119 | 812B | 218 |
| 368J | 49 | 378J | 51 | 390R | 112 | 591Q | 281 | 723P | 118 | 812C | 218 |
| 368K | 49 | 378N | 50 | 390S | 113 | 592N | 280 | 723R | 118 | 812D | 219 |
| 368N | 46 | 378R | 51 | 390Y | 112 | 592P | 281 | 723S | 118 | 812E | 219 |
| 368P | 49 | 378Y | 51 | 391A | 161 | 592Q | 280 | 723Y | 118 | 812G | 221 |
| 368Q | 46 | 379A | 115 | 391B | 160 | 601A | 258/259 | 728A | 159 | 812K | 220 |
| 368R | 46 | 379E | 114 | 391C | 160 | 602A | 230 | 728G | 158 | 813E | 221 |
| 368S | 46 | 379F | 114 | 391D | 162 | 602D | 231 | 728H | 159 | 815M | 226 |
| 368Y | 47 | 379H | 114 | 391E | 162 | 602E | 230 | 728J | 158 | 815P | 226 |
| 369A | 28 | 379J | 114 | 391H | 163 | 602G | 231 | 728N | 158 | 815Q | 227 |
| 369B | 29 | 379K | 116 | 391J | 162 | 602L | 231 | 728R | 158 | 815R | 227 |
| 369C | 28 | 379K | 117 | 391K | 163 | 605A | 257 | 738N | 278 | 815S | 227 |
| 369D | 31 | 379N | 115 | 391L | 162 | 605N | 257 | 743A | 100 | 817A | 216 |
| 369N | 30 | 379R | 114 | 391N | 160 | 607H | 256 | 743B | 101 | 817B | 216 |
| 369P | 30 | 379Y | 114 | 391R | 160 | 607J | 256 | 743D | 99 | 822A | 224 |
| 369R | 28 | 383A | 88/261 | 391S | 160 | 607K | 256 | 743N | 98 | 822B | 224 |
| 369S | 30 | 383B | 260 | 392B | 181 | 607L | 256 | 743R | 98 | 822C | 225 |
| 369Y | 30 | 383E | 89 | 392E | 178 | 616J | 199 | 743Y | 100 | 822E | 225 |
| 370A | 134 | 383H | 91 | 392F | 178 | 616K | 199 | 745A | 37 | 825A | 217 |
| 370B | 135 | 383N | 91 | 392H | 179 | 616N | 205 | 745B | 36 | 825B | 215 |
| 370C | 137 | 383P | 90 | 392J | 180 | 616Q | 199 | 745D | 37/39 | 825C | 214 |
| 370D | 136 | 383R | 90 | 392N | 180 | 616R | 201 | 745E | 38 | 825D | 215 |
| 370N | 134 | 383S | 90 | 392R | 178 | 616T | 201 | 745R | 38 | 825G | 223 |
| 370P | 137 | 384A | 44 | 392Y | 178 | 667A | 272 | 745S | 37 | 826A | 212 |
| 370R | 134 | 384B | 43 | 393A | 176 | 673A | 283 | 745Y | 37 | 826B | 213 |
| 370S | 137 | 384F | 45 | 393B | 177 | 673B | 282 | 746A | 71 | 826C | 222 |
| 370Y | 137 | 384H | 42 | 393C | 175 | 673N | 283 | 746E | 72 | 826N | 213 |
| 371A | 25 | 384J | 45 | 393H | 176 | 693B | 284 | 746H | 73 | 826P | 212/213 |
| 371B | 26 | 384N | 45 | 393J | 176 | 693C | 285 | 746J | 73 | 831A | 229 |
| 371E | 27 | 384R | 42 | 393P | 174 | 710A | 154/155 | 746K | 73 | 831B | 228 |
| 371F | 24 | 384S | 42 | 393R | 174 | 710B | 153/157 | 746N | 72 | 831L | 228 |
| 371G | 27 | 386A | 62 | 393Y | 174 | 710H | 156 | 746R | 70 | 831Y | 229 |
| 371H | 27 | 386E | 60 | 394A | 173 | 710J | 156 | 746Y | 70 | | |
| 371N | 24 | 386F | 61 | 394C | 170 | 710P | 155 | 748A | 57 | | |
| 371R | 24 | 386H | 63 | 394E | 172 | 710R | 156 | 748B | 59 | | |
| 371S | 26 | 386J | 60 | 394Q | 171 | 710S | 154 | 748E | 58 | | |

Collection

14

La nobleza competía para mostrar los espacios más atractivos e influyentes en las tendencias de la época, así nació el uso de la iluminación decorativa como un elemento diferenciador en los salones de los palacios y mansiones del siglo XVI.

Por otra parte, la industria del cristal se vio afectada de forma positiva por la revolución industrial, la cual, añadida a la tradición artesana italiana de grabado de abalorios de cristal, embelleció las lámparas colgantes de la nobleza y la clase acomodada europea.

Este estilo está repleto de posibilidades decorativas, creando atmósferas llenas de lujo y sofisticación.

Si está buscando un estilo de decoración elegante y tradicional, mediante el uso de modelos clásicos ayudamos a crear espacios únicos, que permiten conseguir atmósferas expresivas.

Los detalles son lo que diferencian este estilo. El estilo clásico está basado en lugares ostentosos embellecidos mediante el uso de los elementos, con nuestros acabados y diseños originales atribuimos al producto de una elegancia inigualable para este tipo de piezas.

El clásico es nuestro estilo estandarte y esa es la razón por la cual siempre vamos a esforzarnos en crear diseños únicos, que mejoran los espacios gracias a los principios de equilibrio y armonía.

Si hay algo que caracteriza este estilo, es su diseño refinado y su elegancia atemporal, que siempre mantiene su identidad. El tiempo no pasa de una forma negativa para los modelos clásicos, siempre se pueden adaptar a ambientes diferentes, bien aportando contraste en ambientes modernos o bien creando espacios con su propia personalidad, la clave a su éxito es la capacidad de balancear la fuerza visual de todos sus componentes.

Nobility competed to show the most attractive and influential places amongst the trends of the time, so it stormed to use light as a notable decorative element for the magnificent halls of the mansions during the sixteenth century.

On the other hand, the glass industry was affected in a very positive way by the industrial revolution, which in addition to the great carving glass beads tradition of craftsmen in Italy, delighted the hanging lamps of the nobility and European well-off class.

This style is full of decorative possibilities, creating atmospheres full of luxury and sophistication.

If you are looking for an elegant and traditional decoration style, through the use of our Classic models we help you create unique spaces, that allow you to achieve an expressive atmosphere.

Details are what sets this style apart. We develop exquisite products that allow for delightful accommodations. Classic style is based on ostentatious places and embellished by the use of elements, with our finishes and original designs, we endow the product with an uncommon subtlety for this type of decorative pieces.

Classic is our flagship within styles, and that's why we're always going to put in effort to create unique designs, which enhance the spaces based on balance and harmony.

If something is characteristic to this style is its refined design and its timeless elegance, which always maintains its identity. Time does not pass in a negative way for the Classic models, they are always able to adapt to different environments, either by playing with contrast between modern spaces and classical lighting, or creating spaces with its own personality, the key to its success lies in being able to balance the visual strength of all its components.



С момента рождения RIPERLAMP, в 1985 году, мы стремились создавать вдохновляющие произведения, которые любят. Для этого мы ищем совершенство во всех аспектах наших проектов. На протяжении всех этих лет RIPERLAMP специализируется на разработке и производстве декоративных светильников, как для жилых, так и для коммерческих целей, а также исполнение специальных проектов под заказ.

Если вы ищете элегантный и традиционный декор, с помощью классического стиля вы можете создавать уникальные пространства, достигая грандиозной атмосферы.

Детали в этом стиле имеют значение, так как мы создаем привлекательную продукцию, которая наделяет магией несравненные пространства. Исходя из того, что классический стиль основан роскошных местах и перегружен элементами, с нашей отделкой и оригинальным дизайном, мы наделяем продукт необычной тонкостью для этого типа декоративных элементов, поскольку наш флагман в стилях таков, и, именно, поэтому мы всегда будем прилагать много усилий для создания уникальных дизайнов, которые расширяют пространство, основанное на балансе и гармонии.

Если что-то характерно, особенно для этого стиля, это его изысканный дизайн и его неподвластная времени элегантность. Стиль, который не проходит со временем, который всегда сохраняет свою индивидуальность. Он находится за пределами моды и тенденций, способен адаптироваться к различным средам, либо играя с контрастами между современными пространствами и классическим освещением, либо создавая места, вдохновленные эпохами прошлого, с индивидуальностью и очень четким определением, являющимся ключом к его успеху, уравнивает визуальную силу всех его компонентов.

Этот стиль полон декоративных возможностей, создавая атмосферу роскоши и изысканности, которая никого не оставит равнодушным.

История классического стиля в освещении.

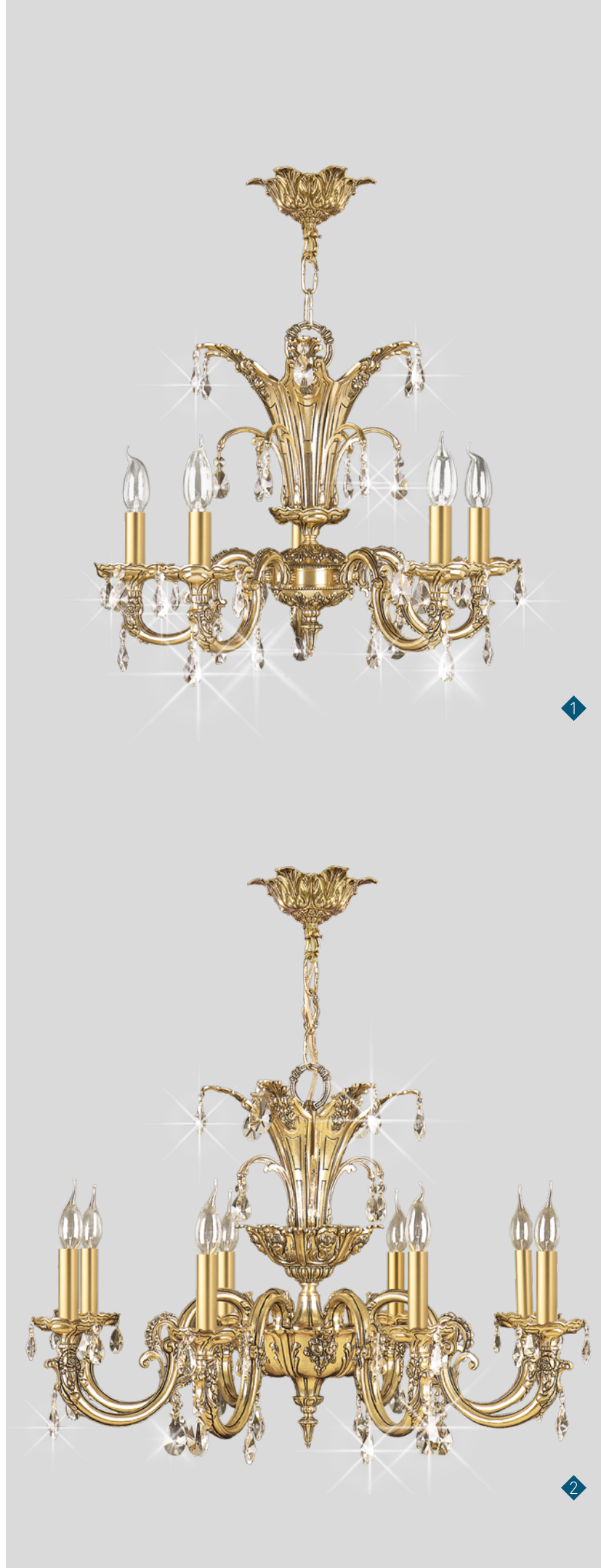
Дворянство боролось за то, чтобы показать наиболее привлекательные и влиятельные места в тенденциях времени, поэтому оно штурмовало использование света в качестве великолепного декоративного элемента для великих залов особняков самых богатых из шестнадцатого века.

С другой стороны, промышленная революция очень положительно повлияла на стекольную промышленность, добавив к великим традициям мастеров Италии работу со стеклом, что восхитило все зажиточные европейские сословия.

Royal

The Royal Family showcases the purest classical style. Made by injected casting engraved pieces, which gather the most significative features of the artisan pieces. This has allowed Royal Collection to become the perfect example of Classical Lighting. Glass beads can be either Asfour or Swarovski.

16



| | Ref. | | Dec. | 💡 | 🔌 | ∅ | ⌈ | ⌋ | Kg | Glass |
|---|------|------------|------|-----|-------------|----|-----|---|-----------|-------|
| 1 | 003B | Lamp | AA | 5 | E14 Led 5W | 60 | 43 | - | 6,8 | 1 / 2 |
| 2 | 003A | Lamp | AA | 6/8 | E14 Led 5W | 84 | 61 | - | 14 / 16,4 | 1 / 2 |
| 3 | 003Y | Floor Lamp | AA | 1 | E27 Led 10W | 50 | 165 | - | 17 | - |
| 4 | 003R | Table Lamp | AA | 1 | E27 Led 10W | 50 | 89 | - | 6,4 | - |

Special lamp in project section

Glass: 1 Asfour / 2 Strass Swarovski



17

| Ref. | Dec. | 💡 | 🔌 | ∅ | ⌈ | ⌋ | Kg | Crystal |
|-------------|------|-------|------------|----|----|---|-----------|---------|
| 1 003A Lamp | AA | 12/16 | E14 Led 5W | 84 | 61 | - | 16,3 / 22 | 1 / 2 |

Crystal: 1 Asfour / 2 Strass Swarovski



2

18



1

| Ref. | Dec. | Light | Socket | Ø | H | W | Kg | Crystal |
|--------|------|-------|------------|-----|-----|---------|-----------|---------|
| 1 003C | AB | 32 | E14 Led 5W | 128 | 103 | - | 48 | 1 / 2 |
| 1 003N | AA | 2 / 3 | E14 Led 5W | 44 | 40 | 28 / 30 | 1,9 / 2,5 | 1 / 2 |

Crystal: 1 Asfour / 2 Strass Swarovski



19



| Ref. | Dec. | 💡 | 🔌 | ∅ | ⌈ | ⌋ | Kg | Crystal | |
|--------|------|----|----|------------|-----|-----|----|---------|-------|
| 1 003D | Lamp | AB | 40 | E14 Led 5W | 128 | 137 | - | 65 | 1 / 2 |

Crystal: 1 Asfour / 2 Strass Swarovski

R París

París collection is a classical design from our story. It has been created for exclusive spaces through the craftsmanship of casted brass. The pieces under this collection can be combined with Asfour or Swarovski.

20



1



3



2

| Ref. | Dec. | Light | Socket | Ø | H | W | Kg | Crystal | |
|--------|------------|-------|--------|-------------|-------|----|-------|-----------|-------|
| 1 047A | Lamp | AB | 8/10 | E14 Led 5W | 92 | 57 | - | 15,2/17,2 | 1 / 2 |
| 2 047N | Wall Lamp | AB | 1/2 | E14 Led 5W | 16/31 | 32 | 23/21 | 1,2 / 1,8 | 1 / 2 |
| 3 047R | Table Lamp | AB | 1 | E27 Led 10W | 40 | 55 | - | 2,25 | - |

Crystal: 1 Asfour / 2 Strass Swarovski



1

21

| Ref. | Dec. | 💡 | 🔌 | ∅ | I | H | Kg | Crystal | |
|--------|------|----|-------|------------|----|----|----|---------|-------|
| 1 047B | Lamp | AB | 16/20 | E14 Led 5W | 92 | 57 | - | 18/20,6 | 1 / 2 |

Crystal: 1 Asfour / 2 Strass Swarovski

R Palmera



1



2

22



3

Palmera collection is made by passion about classical models in mind. Thanks to the remarkable craftsmanship, the pieces under the Palmera collection display a fantastic design and can be combined with Asfour or Swarovski crystal.



4

| Ref. | Dec. | Light | Socket | Ø | H | W | Kg | Crystal | |
|--------|------------|-------|--------|-------------|-------|----|-------|---------|-------|
| 1 010A | Lamp | AA | 6/8 | E14 Led 5W | 73 | 48 | - | 8,6/11 | 1 / 2 |
| 2 010B | Lamp | AA | 3/5 | E14 Led 5W | 61 | 48 | - | 4,1/6,5 | 1 / 2 |
| 3 010N | Wall Lamp | AA | 1/2 | E14 Led 5W | 12/38 | 34 | 36/34 | 0,8/2 | 1 / 2 |
| 4 010R | Table Lamp | AA | 1 | E27 Led 10W | 30 | 48 | - | 2 | 1 / 2 |

Crystal: 1 Asfour / 2 Strass Swarovski



| Ref. | Dec. | 💡 | 🔌 | ∅ | ⌈ | ⌋ | Kg | Crystal |
|-------------|------|----|------------|----|----|---|----|---------|
| 1 010G Lamp | AA | 15 | E14 Led 5W | 73 | 70 | - | 21 | 1 / 2 |

Crystal: 1 Asfour / 2 Strass Swarovski

R Hera

Hera collection has been conceived with subtle foundry elements, which together with its smooth surface, showcases a light design. This makes Hera collection versatile, allowing it to become the main character of both classical and more modern environments. Besides the subtle foundry elements, the collection merges with glass elements.



1



2



3

| Ref. | Dec. | Light | Socket | Ø | H | W | Kg | Lamp shade | Glass | |
|--------|------------|-------|--------|-------------|----|----|----|------------|-------|-------|
| 1 371N | Wall Lamp | B0 | 1 | E27 Led 10W | 40 | 57 | 26 | 1,2 | 1 / 2 | 1 / 2 |
| 2 371F | Pendant | B0 | 3 | E27 Led 10W | 41 | 67 | - | 6 | - | 1 / 2 |
| 3 371R | Table Lamp | B0 | 2 | E14 Led 5W | 45 | 72 | - | 3,2 | 1 / 2 | 1 / 2 |



25

1

| Ref. | Dec. | 💡 | 🔌 | ∅ | I | ⚡ | Kg | Glass | Beads | |
|--------|------|----|---|-------------|----|----|----|-------|-------|-------|
| 1 371A | Lamp | B0 | 6 | E14 Led 10W | 80 | 57 | - | 9 | 1 / 2 | 1 / 2 |

Glass: 1 Lilac / 2 Fume Beads: 1 Lilac / 2 Fume crystal drop • Trimmings tassel

R Hera

26



2



1



3

| Ref. | Dec. | Light | Socket | Ø | H | W | Kg | Lamp shade | Glass | Beads | |
|---------------|------------|-------|--------|------------------------------|----|-----|----|------------|-------|-------|-------|
| 1 371B | Lamp | CJ | 9 | 3 E27 Led 5W & 6 E27 Led 10W | 76 | 61 | - | 10 | - | 1 / 2 | 1 / 2 |
| 2 371Y | Floor Lamp | CJ | 1 | E27 Led 10W | 45 | 175 | - | 9 | 1 / 2 | 1 / 2 | - |
| 3 371S | Table Lamp | CX | 1 | E27 Led 10W | 40 | 56 | - | 2,5 | 1 / 2 | 1 / 2 | - |

Lamp shade: 1 Cream / 2 Black Glass: 1 Lilac / 2 Fume Beads: 1 Lilac / 2 Fume crystal drop • Trimmings tassel



1



2

| Ref. | Dec. | Light | Socket | Ø | I | H | Kg | Lamp shade | Glass | Beads | |
|--------|---------|-------|--------|-------------|----|----|----|------------|-------|-------|-------|
| 1 371E | Pendant | B0 | 6 | E27 Led 10W | 41 | 61 | - | 5,5 | - | 1 / 2 | 1 / 2 |
| 1 371H | Pendant | B0 | 9 | E27 Led 10W | 60 | 70 | - | 8 | - | 1 / 2 | 1 / 2 |
| 2 371G | Pendant | B0 | 3 | E14 Led 5W | 45 | 50 | - | 3 | 1 / 2 | 1 / 2 | 1 / 2 |

Lamp shade: 1 Cream / 2 Black

Glass: 1 Lilac / 2 Fume

Beads: 1 Lilac / 2 Fume crystal drop • Trimmings tassel

R Cora

The essence of the classical lamps becomes obvious in the collection Cora. The arms of the lamps become the most representative piece, providing enough elegance to light up any kind of environment.

28



1



2



3

| Ref. | Dec. | Light | Socket | Ø | H | W | Kg | Lamp shade | Crystal |
|---------------|------------|-------|--------|-------------|----|----|----|------------|---------|
| 1 369A | Lamp | CX | 5/6 | E14 Led 5W | 73 | 67 | - | 7/8 | 1 / 2 |
| 2 369C | Lamp | CJ | 5/6 | E14 Led 5W | 73 | 57 | - | 7/8 | 1 / 2 |
| 3 369R | Table Lamp | BO | 1 | E27 Led 10W | 40 | 54 | - | 1 / 2 | 1 / 2 |

Lamp shade: 1 Cream / 2 Black

Crystal: 1 Lilac / 2 Fume



29



| Ref. | Dec. | Light | Socket | Ø | H | W | Kg | Crystal | |
|--------|------|-------|--------|------------|----|----|----|---------|-------|
| 1 369B | Lamp | CX | 9/12 | E14 Led 5W | 73 | 67 | - | 9/10 | 1 / 2 |

Crystal: 1 Lilac / 2 Fume

R Cora



1



2



3

30



4

| Ref. | Dec. | 💡 | 🔌 | ∅ | I | H | Kg | Lamp shade | Glass | |
|--------|------------|----|---|-------------|----|-----|----|------------|-------|-------|
| 1 369N | Wall Lamp | CJ | 1 | E27 Led 10W | 40 | 58 | 26 | 1,1 | 1 / 2 | 1 / 2 |
| 2 369P | Wall Lamp | CJ | 1 | E27 Led 10W | 30 | 38 | 20 | 0,82 | 1 / 2 | 1 / 2 |
| 3 369S | Table Lamp | CJ | 1 | E27 Led 10W | 30 | 36 | - | 1,25 | 1 / 2 | 1 / 2 |
| 4 369Y | Floor Lamp | CJ | 1 | E27 Led 10W | 45 | 177 | - | 6,7 | 1 / 2 | 1 / 2 |

Lamp shade: 1 Cream / 2 Black

Glass: 1 Lilac / 2 Fume



| Ref. | Dec. | 💡 | 🔌 | ∅ | I | H | Kg | Crystal | |
|--------|------|----|----|------------|----|-----|----|---------|-------|
| 1 369D | Lamp | AA | 18 | E14 Led 5W | 94 | 100 | - | 22 | 1 / 2 |

Crystal: 1 Lilac / 2 Fume



32

Chateau's collection combines even brass sheets, striped rectangular brass tubes and classical pieces which confer an elegant personality. Furthermore, Italian crystal drops offered in either matt or black provide a unique appearance.



| Ref. | Dec. | Light | Socket | Ø | H | W | Kg | Crystal | |
|--------|------|-------|--------|------------|-----|----|----|---------|-------|
| 1 327D | Lamp | CJ | 24/28 | E14 Led 5W | 129 | 73 | - | 41 / 46 | 1 / 2 |
| 2 327A | Lamp | CJ | 10/12 | E14 Led 5W | 80 | 48 | - | 7 / 9 | 1 / 2 |

Crystal: 1 Matt italian / 2 Black crystal



33



| Ref. | Dec. | 💡 | 🔌 | ∅ | I | H | Kg | Crystal | |
|--------|------|----|-------|------------|-----|----|----|---------|-------|
| 1 327C | Lamp | CJ | 20/24 | E14 Led 5W | 129 | 73 | - | 26 / 30 | 1 / 2 |

Crystal: 1 Matt italian / 2 Black crystal



1



2

34



3



4

| Ref. | Dec. | Light | Socket | Ø | H | W | Kg | Glass | |
|---------------------------------------|------------|-------|--------|-------------|----|----|----|-------|-------|
| 1 327N | Wall Lamp | CJ | 2/3 | E14 Led 5W | 36 | 28 | 21 | 3/4 | 1 / 2 |
| 2 327P | Wall Lamp | CJ | 5 | E14 Led 5W | 52 | 55 | 34 | 8 | 1 / 2 |
| Glass: 1 Matt italian / 2 Black Glass | | | | | | | | | |
| 3 327R | Table Lamp | CJ | 1 | E27 Led 10W | 45 | 79 | - | 4 | 3 |
| 4 327S | Table Lamp | CJ | 1 | E27 Led 10W | 30 | 49 | - | 3 | 3 |

Glass: 1 Clear Glass / 2 Black Glass



35

1

| Ref. | Dec. | Light | Socket | Ø | H | W | Kg | Crystal | |
|--------|------|-------|--------|------------|-----|----|----|---------|-------|
| 1 327B | Lamp | CJ | 12/16 | E14 Led 5W | 103 | 73 | - | 16 / 19 | 1 / 2 |

Crystal: 1 Matt italian / 2 Black crystal

Special lamp in project section

R Arco

Arco collection incorporates precious trumpets as arms. The body of the collection can be either in Asfour or Strass Swarovski, creating a unique piece of art.



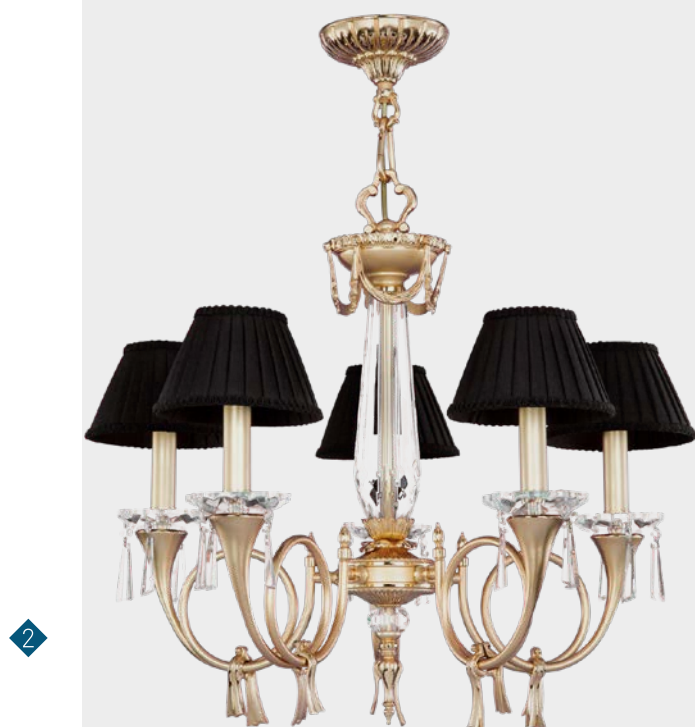
36



| Ref. | Dec. | 💡 | 🔌 | ∅ | I | H | Kg | Lamp shade | Crystal | |
|--------|------|----|------|------------|----|----|----|------------|---------|-------|
| 1 745B | Lamp | CX | 9/12 | E14 Led 5W | 76 | 78 | - | 12/14 | 1 / 2 | 1 / 2 |

Lamp shade: 1 Cream / 2 Black

Crystal: 1 Asfour / 2 Strass Swarovski



| Ref. | Dec. | 💡 | 🔌 | ∅ | I | H | Kg | Lamp shade | Crystal | |
|--------|------------|----|---|-------------|----|-----|----|------------|---------|-------|
| 1 745A | Lamp | BJ | 6 | E14 Led 5W | 76 | 73 | - | 9,5 | 1 / 2 | 1 / 2 |
| 2 745D | Lamp | BO | 5 | E14 Led 5W | 66 | 57 | - | 8 | 1 / 2 | 1 / 2 |
| 3 745S | Table Lamp | CX | 1 | E27 Led 10W | 40 | 55 | - | 3,6 | 1 / 2 | - |
| 4 745Y | Floor Lamp | CX | 2 | E14 Led 5W | 45 | 185 | - | 8 | 1 / 2 | 1 / 2 |

Lamp shade: 1 Cream / 2 Black

Crystal: 1 Asfour / 2 Strass Swarovski

38



3



1



2

| Ref. | Dec. | Light | Socket | Ø | H | W | Kg | Lamp shade | Crystal | |
|--------|------------|-------|--------|------------|----|----|----|------------|---------|-------|
| 1 745E | Pendant | BJ | 3 | E14 Led 5W | 45 | 53 | - | 3 | 1 / 2 | 1 / 2 |
| 2 745N | Wall Lamp | BJ | 2 | E14 Led 5W | 45 | 48 | 27 | 3 | 1 / 2 | 1 / 2 |
| 3 745R | Table Lamp | B0 | 3 | E14 Led 5W | 45 | 77 | - | 5,7 | 1 / 2 | 1 / 2 |

Lamp shade: 1 Cream / 2 Black

Crystal: 1 Asfour / 2 Strass Swarovski



Swarovski

Asfour

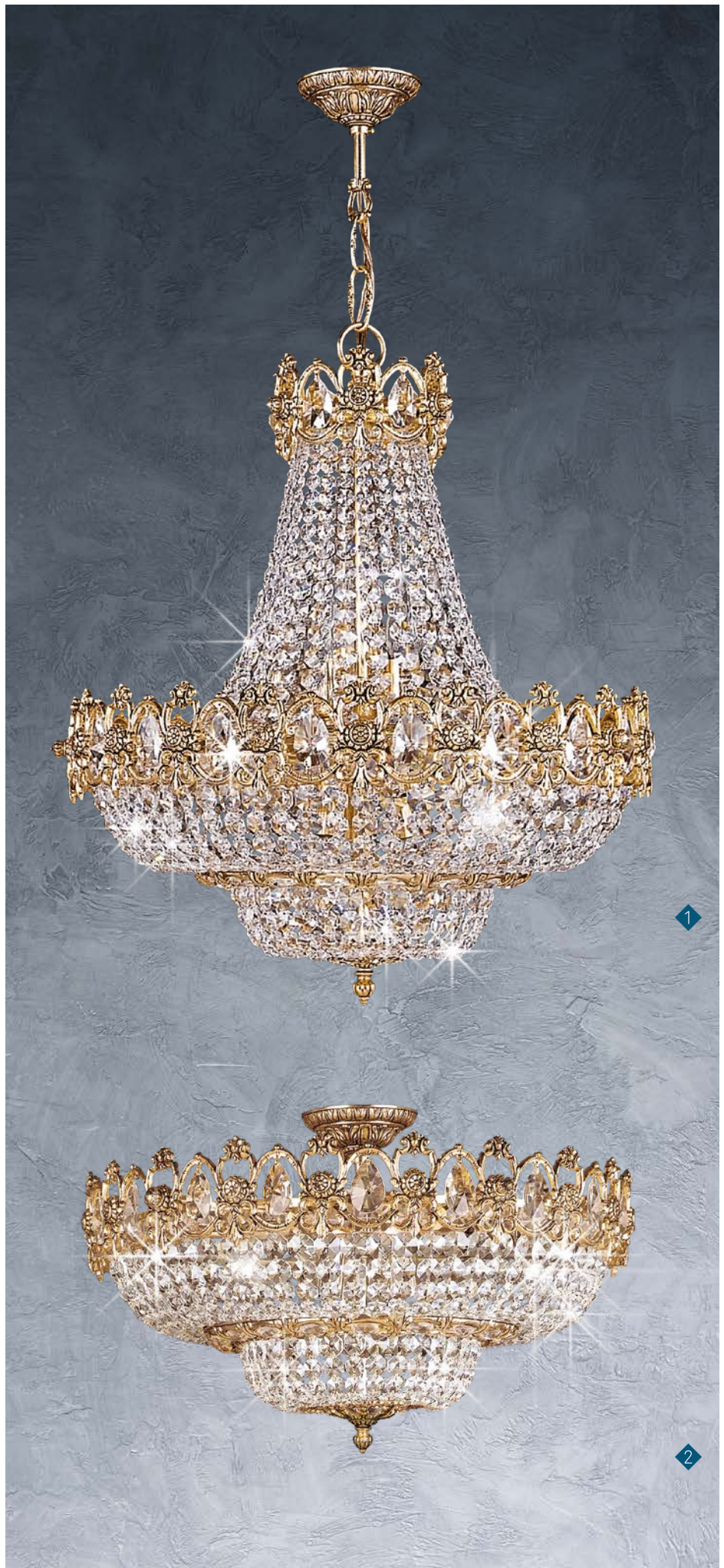


| Ref. | Dec. | Light | Socket | Ø | H | W | Kg | Lamp shade | Crystal | |
|--------|------|-------|--------|------------|-------------------|----|----|------------|---------|-------|
| 1 745D | Lamp | BO | 5 | E14 Led 5W | 61 Without shades | 57 | - | 8 | 1 / 2 | 1 / 2 |

Lamp shade: 1 Cream / 2 Black

Crystal: 1 Asfour / 2 Strass Swarovski

40



| Ref. | Dec. | Light | Socket | Ø | H | W | Kg | Crystal | |
|--------|----------------|-------|--------|------------|----|----|----|---------|-------|
| 1 051E | Pendant | AA | 9 | E14 Led 5W | 56 | 65 | - | 11,7 | 1 / 2 |
| 1 051F | Pendant | AA | 10 | E14 Led 5W | 68 | 70 | - | 14 | 1 / 2 |
| 2 051H | Recessed light | AA | 7 | E14 Led 5W | 56 | 37 | - | 10 | 1 / 2 |
| 2 051J | Recessed light | AA | 8 | E14 Led 5W | 68 | 40 | - | 12,4 | 1 / 2 |
| 3 051N | Pendant | AA | 3 | E14 Led 5W | 33 | 45 | - | 3 | 1 / 2 |



| Ref. | Dec. | ⚡ | 💡 | ∅ | I | H | Kg | Crystal | |
|--------|-----------|----|----|------------|-----|----|----|---------|-------|
| 1 051A | Lamp | AA | 14 | E14 Led 5W | 93 | 65 | - | 15,2 | 1 / 2 |
| 1 051B | Lamp | AA | 16 | E14 Led 5W | 105 | 70 | - | 18,2 | 1 / 2 |
| 2 051P | Wall Lamp | AA | 2 | E14 Led 5W | 25 | 33 | 10 | 1,5 | 1 / 2 |

Crystal: 1 Asfour / 2 Strass Swarovski



3

42



1

2

The height of these items is with the crystal included

| Ref. | Dec. | 💡 | 🔌 | ∅ | I | H | Kg | Lamp shade | Crystal | |
|---------------|--------------------|----|---|------------------------|----|----|----|------------|---------|-------|
| 1 384R | Table Lamp | JA | 3 | E27 Led 10W & 2 G9 25W | 25 | 74 | - | 3,7 | 1 / 2 | 1 / 2 |
| 2 384S | Table Lamp | JA | 1 | E27 Led 10W | 20 | 50 | - | 1,5 | 1 / 2 | 1 / 2 |
| 3 384H | Semi-flushed light | CX | 6 | E14 Led 5W | 50 | 38 | - | 7,5 | - | 1 / 2 |

Lamp shade: 1 Beige / 2 Black Crystal: 1 Asfour / 2 Strass Swarovski



The height of these items is with the crystal included

| Ref. | Dec. | 💡 | 🔌 | ∅ | ⌈ | ⌋ | Kg | Crystal |
|--------|------|----|------------|----|----|---|------|---------|
| 1 384B | JA | 18 | E14 Led 5W | 92 | 75 | - | 16,5 | 1 / 2 |
| 1 384B | JA | 12 | E14 Led 5W | 92 | 75 | - | 14 | 1 / 2 |

Crystal: 1 Asfour / 2 Strass Swarovski

44



The height of these items is with the crystal included

| Ref. | Dec. | 💡 | 🔌 | ∅ | ⌈ | ⌋ | Kg | Crystal | |
|--------|------|----|----|------------|----|----|----|---------|-------|
| 1 384A | Lamp | JA | 18 | E14 Led 5W | 92 | 75 | - | 19,5 | 1 / 2 |
| 1 384A | Lamp | JA | 12 | E14 Led 5W | 92 | 75 | - | 17,5 | 1 / 2 |

Crystal: 1 Asfour / 2 Strass Swarovski



45

The height of these items is with the crystal included

| | Ref. | | Dec. | 💡 | 🔌 | ∅ | ⌈ | ⌋ | Kg | Lamp shade | Crystal |
|---|-------------|--------------------|------|---|--------------------------|----|----|----|-----|------------|---------|
| 1 | 384F | Pendant | CX | 6 | E14 Led 5W | 50 | 75 | - | 10 | - | 1 / 2 |
| 2 | 384J | Semi-flushed light | JA | 1 | E14 Led 5W | 16 | 32 | - | 3 | - | 1 / 2 |
| 3 | 384N | Wall Lamp | CX | 3 | 1 E27 Led 10W & 2 G9 25W | 25 | 73 | 29 | 3,6 | 1 / 2 | 1 / 2 |

Lamp shade: 1 Beige / 2 Black Crystal: 1 Asfour / 2 Strass Swarovski

R Kaia

Kaia collection is a subtle combination of brass foundry, crystal basket and beads. Thanks to the perfect symbiosis of materials, Kaia adapts to any kind of environment, becoming a timeless piece. The floral foundry crown is the iconic piece of this collection.



46



| Ref. | Dec. | Light | Socket | Ø | H | W | Kg | Lamp shade | Crystal | |
|--------|------------|-------|--------|-------------|----|----|----|------------|-----------|-------|
| 1 368B | Lamp | CJ | 6 | E14 Led 5W | 74 | 69 | - | 6 | 1 / 2 / 3 | 1 / 2 |
| 2 368N | Wall Lamp | CX | 2 | E14 Led 5W | 35 | 37 | 21 | 2 | 1 / 2 / 3 | 1 / 2 |
| 3 368Q | Wall Lamp | CX | 2 | E14 Led 5W | 35 | 37 | 21 | 2 | 1 / 2 / 3 | 1 / 2 |
| 4 368R | Table Lamp | CX | 1 | E27 Led 10W | 40 | 60 | - | 2 | 1 / 2 / 3 | - |
| 5 368S | Table Lamp | CX | 1 | E27 Led 10W | 30 | 40 | - | 2 | 1 / 2 / 3 | 1 / 2 |

Lamp shade: 1 Gold / 2 Black / 3 Grey

Crystal: 1 Asfour / 2 Strass Swarovski



1



47

2

| Ref. | Dec. | 💡 | 🔌 | ∅ | ⊥ | ⏏ | Kg | Lamp shade | Crystal | |
|--------|------------|----|---|-------------|----|-----|----|------------|-----------|-------|
| 1 368A | Lamp | CX | 9 | E14 Led 5W | 71 | 77 | - | 11 | 1 / 2 / 3 | 1 / 2 |
| 2 368Y | Floor Lamp | CX | 1 | E27 Led 10W | 45 | 177 | - | 8 | 1 / 2 / 3 | - |

Lamp shade: 1 Gold / 2 Black / 3 Grey

Crystal: 1 Asfour / 2 Strass Swarovski

48



1



2

| Ref. | Dec. | Light | Socket | Ø | H | W | Kg | Lamp shade | Crystal | |
|--------|---------|-------|--------|------------|----|----|----|------------|-----------|-------|
| 1 368H | Lamp | CX | 6 | E14 Led 5W | 60 | 62 | - | 8 | 1 / 2 / 3 | 1 / 2 |
| 2 368E | Pendant | CX | 6 | E14 Led 5W | 42 | 77 | - | 7 | - | 1 / 2 |

Lamp shade: 1 Gold / 2 Black / 3 Grey

Crystal: 1 Asfour / 2 Strass Swarovski

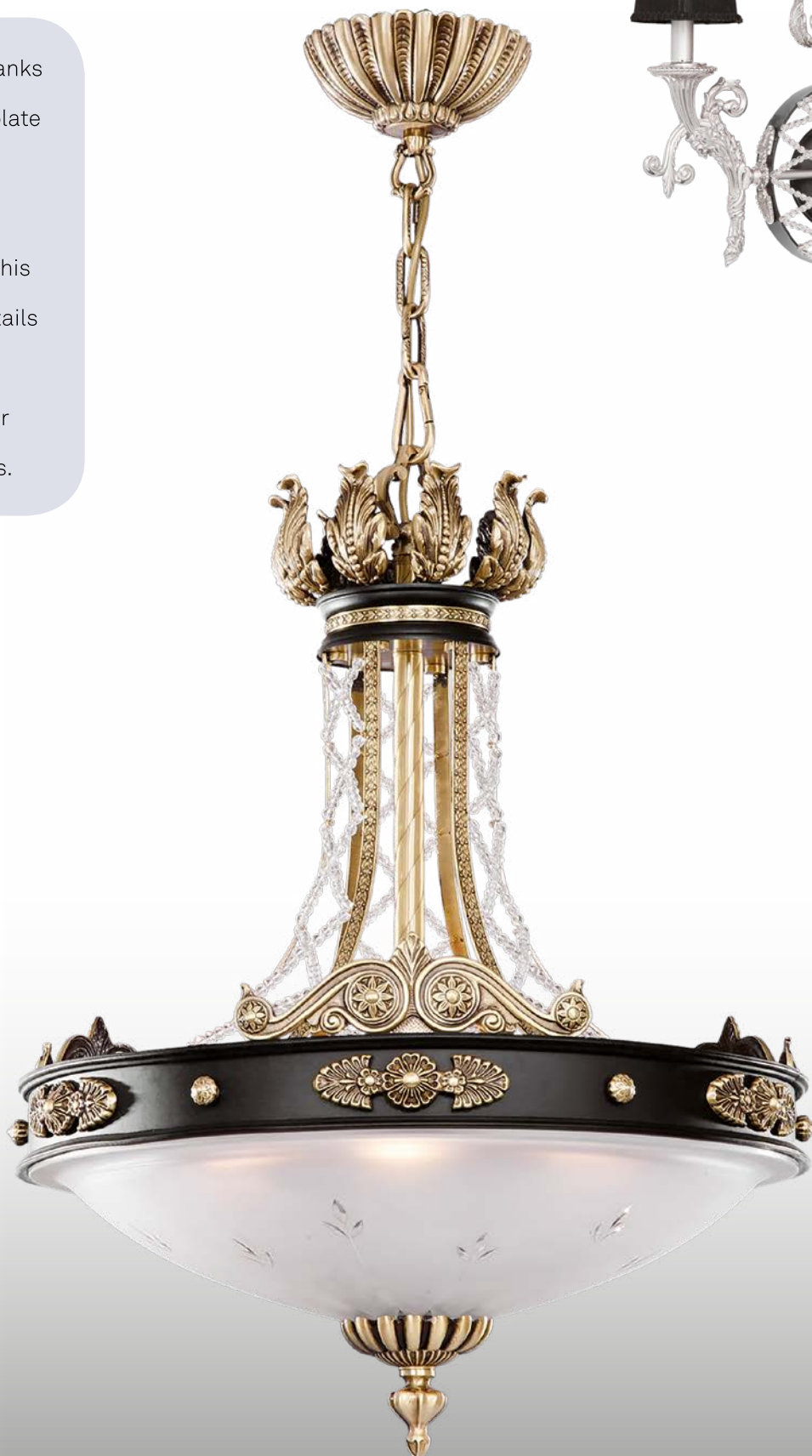


| | Ref. | | Dec. | 💡 | 🔌 | ∅ | ⊥ | ⊥ | Kg | Crystal |
|---|-------------|--------------------|------|---|-------------|----|----|----|-----|---------|
| 1 | 368J | Semi-flushed light | CJ | 9 | E27 Led 10W | 80 | 39 | - | 13 | 1 / 2 |
| 2 | 368K | Semi-flushed light | CX | 6 | E14 Led 10W | 42 | 33 | - | 5 | 1 / 2 |
| 3 | 368P | Wall Lamp | CB | 1 | E14 Led 10W | 26 | 18 | 13 | 1,5 | 1 / 2 |

Crystal: 1 Asfour / 2 Strass Swarovski

R Arianna

When ideas become art. Thanks to the hand carved crystal plate Arianna collection reflects a unique classical design. Craftmanship is what sets this piece apart, remarkable details in the brass pieces. Arianna collection is offered in either Asfour or Swarovski crystals.



50

| Ref. | Dec. | Light | Socket | Ø | H | W | Kg | Color parts | Lamp shade | Crystal | Glass | |
|---------------|-----------|-------|--------|-------------|----|----|----|-------------|------------|-----------|-------|---|
| 1 378E | Pendant | CJ | 6 | E27 Led 10W | 52 | 74 | - | 12 | 1 / 2 / 3 | - | 1 / 2 | - |
| 1 378F | Pendant | CJ | 8 | E27 Led 10W | 80 | 82 | - | 19 | 1 / 2 / 3 | - | 1 / 2 | - |
| 2 378N | Wall Lamp | JB | 2 | E14 Led 5W | 51 | 53 | 17 | 5,4 | 1 / 2 / 3 | 1 / 2 / 3 | 1 / 2 | - |

Color parts: 1 Black / 2 Cobalt / 3 Garnet Lamp shade: 1 Beige / 2 Wine / 3 Black Crystal: 1 Asfour / 2 Strass Swarovski Glass: 1 Acid with carving

Due to the blown glass production process, every piece is unique and might present small bubbles.



1



2

3

51

Due to the blown glass production process, every piece is unique and might present small bubbles.

| Ref. | Dec. | Light | Socket | Ø | H | W | Kg | Color parts | Lamp shade | Crystal | Glass | |
|--------|--------------------|-------|--------|-------------|----|-----|----|-------------|------------|-----------|-------|---|
| 1 378H | Semi-flushed light | CJ | 6 | E27 Led 10W | 52 | 39 | - | 9 | 1 / 2 / 3 | - | - | 1 |
| 1 378J | Semi-flushed light | CJ | 8 | E27 Led 10W | 80 | 42 | - | 16,5 | 1 / 2 / 3 | - | - | 1 |
| 2 378R | Table Lamp | BO | 1 | E27 Led 10W | 25 | 60 | - | 3 | 1 / 2 / 3 | 1 / 2 / 3 | 1 / 2 | - |
| 3 378Y | Floor Lamp | BO | 1 | E27 Led 10W | 32 | 175 | - | 8,9 | 1 / 2 / 3 | 1 / 2 / 3 | 1 / 2 | - |

Color parts: 1 Black / 2 Cobalt / 3 Garnet Lamp shade: 1 Beige / 2 Wine / 3 Black Crystal: 1 Asfour / 2 Strass Swarovski Glass: 1 Acid with carving



1



3

52



2



4



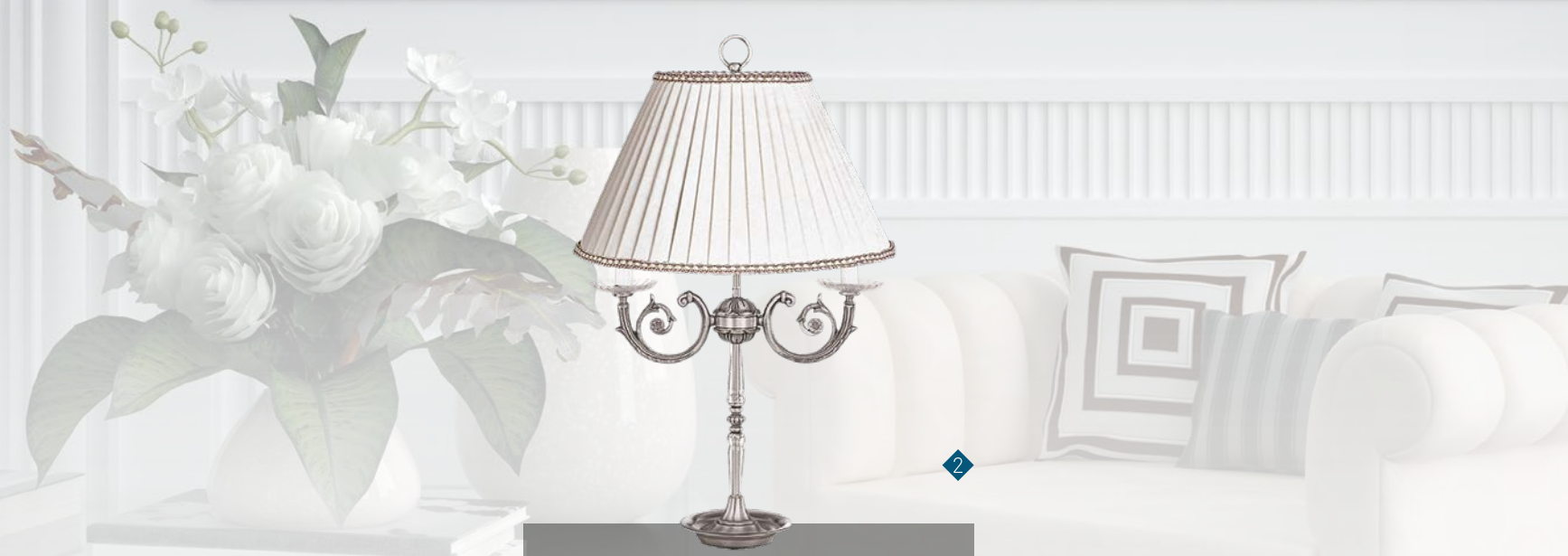
5

| Ref. | Dec. | Light | Socket | Ø | H | W | Kg | Crystal | |
|---------------|--------------------|-------|--------|------------------------------|-----|----|----|---------|-------|
| 1 354C | Lamp | CX | 15 | 9 E14 Led 5W & 6 E27 led 10W | 100 | 90 | - | 15 | 3 |
| 2 354G | Pendant | CX | 6 | E27 Led 10W | 65 | 90 | - | 12 | 3 |
| 3 354E | Pendant | CX | 6 | E27 Led 10W | 65 | 90 | - | 13 | 4 / 5 |
| 4 354H | Semi-flushed light | CX | 6 | E27 Led 10W | 65 | 55 | - | 11 | 4 / 5 |
| 5 354K | Semi-flushed light | CX | 6 | E27 Led 10W | 65 | 55 | - | 10 | 3 |

Crystal: 1 Asfour / 2 Strass Swarovski / 3 Acid with carving / 4 Acid with carving + Asfour / 5 Acid with carving + Swarovski



53



| Ref. | Dec. | 💡 | 🏠 | ∅ | I | H | Kg | Crystal | |
|--------|------------|----|----|------------------------------|-----|----|----|---------|-------|
| 1 354A | Lamp | CX | 15 | 9 E14 Led 5W & 6 E27 led 10W | 100 | 90 | - | 16,5 | 4 / 5 |
| 2 354R | Table Lamp | CX | 2 | E14 Led 5W | 52 | 80 | - | 3 | - |

Crystal: 1 Asfour / 2 Strass Swarovski / 3 Acid with carving / 4 Acid with carving + Asfour / 5 Acid with carving + Swarovski



54

1



4



2



3



5

| Ref. | Dec. | 💡 | 🔌 | ∅ | ⌈ | ⌋ | Kg | Crystal | |
|--------|--------------------|----|----|-------------------------------|-----|-----|----|---------|-------|
| 1 354Y | Floor Lamp | EA | 2 | E14 Led 5W | 52 | 180 | - | 8,5 | - |
| 2 354J | Semi-flushed light | EA | 6 | E27 Led 10W | 65 | 55 | - | 10 | 1 / 2 |
| 3 354P | Wall Lamp | EA | 2 | E14 Led 5W | 45 | 29 | 23 | 3 | 1 / 2 |
| 4 354D | Lamp | EA | 18 | 12 E14 Led 5W & 6 E27 Led 10W | 100 | 98 | - | 18 | 1 / 2 |
| 5 354F | Pendant | EA | 6 | E27 Led 10W | 65 | 98 | - | 12 | 1 / 2 |



| Ref. | Dec. | 💡 | 🔌 | ∅ | I | H | Kg | Crystal | |
|--------|-----------|----|----|------------------------------|-----|----|----|---------|-------|
| 1 354M | Wall Lamp | EA | 4 | E14 Led 5W | 65 | 71 | 34 | 6,8 | 1 / 2 |
| 2 354B | Lamp | EA | 15 | 9 E14 Led 5W & 6 E27 led 10W | 100 | 98 | - | 15 | 1 / 2 |

Crystal: 1 Asfour / 2 Strass Swarovski

R Duna

1

2



56

| Ref. | Dec. | 💡 | 🔌 | ∅ | I | H | Kg | Crystal | |
|--------|------------|----|---|-------------|----|----|----|---------|-------|
| 1 748N | Wall Lamp | AB | 2 | E14 Led 5W | 34 | 45 | 17 | 1,6 | 1 / 2 |
| 2 748R | Table Lamp | AB | 1 | E27 Led 10W | 40 | 55 | - | 1,4 | - |

Crystal: 1 Asfour / 2 Strass Swarovski



57



| Ref. | Dec. | 💡 | 🔌 | ∅ | ⊥ | ⊥ | Kg | Crystal | |
|--------|------|----|---|------------|----|----|----|---------|-------|
| 1 748A | Lamp | AB | 6 | E14 Led 5W | 74 | 65 | - | 12 | 1 / 2 |

Crystal: 1 Asfour / 2 Strass Swarovski

R Duna



1



2

58

| Ref. | Dec. | Light | Socket | Ø | H | W | Kg | Crystal | Glass |
|--------|--------------------|-------|------------|----|----|---|----|---------|-------|
| 1 748E | Pendant | AB 3 | E14 Led 5W | 58 | 58 | - | 6 | 1 / 2 | 1 |
| 2 748H | Semi-flushed light | AB 3 | E14 Led 5W | 58 | 31 | - | 5 | - | 1 |

Crystal: 1 Asfour / 2 Strass Swarovski / 3 Acid with carving

Glass: 1 Acid with carving



| Ref. | Dec. |  |  | \varnothing | I | H | Kg | Crystal | Glass | |
|--------|------|---|---|---------------|------------|------------|----|--|-------|----------------------------|
| 1 748B | Lamp | AB | 6/9 | E14 Led 5W | 74 | 58 | - | 7,5/10 | 1 / 2 | 1 |
| | | | | | | | | Crystal: 1 Asfour / 2 Strass Swarovski / 3 Acid with carving | | Glass: 1 Acid with carving |

R San Petesburgo



60

1



2



3



The height of these items is with the crystal included

| Ref. | Dec. | 💡 | 🔌 | ∅ | I | H | Kg | Lamp shade | Crystal | |
|---------------|--------------------|----|---|-------------|----|----|----|------------|---------|-------|
| 1 386J | Semi-flushed light | CJ | 1 | E14 Led 5W | 18 | 37 | - | 2,3 | - | 1 / 2 |
| 2 386R | Table Lamp | CJ | 1 | E27 Led 10W | 20 | 50 | - | 2,5 | 1 / 2 | 1 / 2 |
| 3 386E | Pendant | CJ | 6 | E14 Led 5W | 42 | 76 | - | 10 | - | 1 / 2 |

Lamp shade: 1 Gold / 2 Grey

Crystal: 1 Asfour + Colors Asfour / 2 Strass Swarovski + Colors Strass Swarovski



61



| Ref. | Dec. | 💡 | 🔌 | ∅ | ⤴ | | Kg | Crystal | |
|--------|---------|----|----|------------|----|----|----|---------|-------|
| 1 386F | Pendant | CJ | 12 | E14 Led 5W | 80 | 67 | - | 17,5 | 1 / 2 |

Crystal: 1 Asfour + Colors Asfour / 2 Strass Swarovski + Colors Strass Swarovski

R San Petesburgo

62



1

The height of these items is with the crystal included

| Ref. | Dec. | Light | Socket | Ø | H | W | Kg | Glass | Crystal | |
|--------|------|-------|--------|------------------------------|----|--|----|-------|---------|-------|
| 1 386A | Lamp | BO | 12 | 6 E14 Led 5W & 6 E27 Led 10W | 85 | 73 | - | 16 | 1 | 1 / 2 |
| | | | | Glass: 1 Acid with carving | | Crystal: 1 Asfour + Colors Asfour / 2 Strass Swarovski + Colors Strass Swarovski | | | | |



| Ref. | Dec. | 💡 | 🔌 | ∅ | ⌈ | ⌋ | Kg | Lamp shade | Crystal | |
|---------------|--------------------|----|---|------------------------------|----|----|----|------------|---------|-------|
| 1 386H | Semi-flushed light | BO | 6 | E14 Led 5W | 42 | 40 | - | 7,5 | - | 1 / 2 |
| 2 386K | Flushed light | BO | 1 | E14 Led 5W | 14 | 37 | - | 1,9 | - | 1 / 2 |
| 3 386N | Wall Lamp | BO | 2 | 1 E14 Led 5W & 1 E27 Led 10W | 16 | 50 | 22 | 2,4 | 1 / 2 | 1 / 2 |

Lamp shade: 1 Gold / 2 Grey

Crystal: 1 Asfour + Colors Asfour / 2 Strass Swarovski + Colors Strass Swarovski

64



1



2



3



4



5

| Ref. | Dec. | Light | Socket | Ø | H | W | Kg | Alabaster | |
|--------|------------|-------|--------|------------------------------|----|-----|----|-----------|---|
| 1 253Y | Floor Lamp | AY | 1 | E27 Led 10W | 50 | 182 | - | 20 | 1 |
| 2 253R | Table Lamp | AY | 1 | E27 Led 10W | 40 | 66 | - | 3,5 | 1 |
| 3 235S | Table Lamp | AY | 1 | E27 Led 10W | 30 | 47 | - | 3 | 1 |
| 4 253B | Lamp | AY | 10 | 1 E14 Led 5W & 9 E27 Led 10W | 97 | 103 | - | 36 | 1 |
| 5 253N | Wall Lamp | AY | 1 | E27 Led 10W | 18 | 26 | 28 | 2 | 1 |
| 5 253P | Wall Lamp | AY | 2 | E27 Led 10W | 43 | 26 | 26 | 3,8 | 1 |

Alabaster: 1 White



65

| Ref. | Dec. | 💡 | 🔌 | ∅ | ⌈ | ⌋ | Kg | Alabaster |
|--------|------|----|---|------------------------------|----|----|----|-----------|
| 1 253A | Lamp | AY | 7 | 1 E14 Led 5W & 6 E27 Led 10W | 77 | 64 | - | 17,8 |

Alabaster: 1 White



| | Ref. | | Dec. | 💡 | 🔌 | ∅ | ⊥ | 📏 | Kg |
|---|-------------|------------|------|---|-------------|----|-----|---|-----|
| 1 | 248R | Table Lamp | AY | 1 | E27 Led 10W | 30 | 52 | - | 1,8 |
| 2 | 248Y | Floor Lamp | AY | 1 | E27 Led 10W | 50 | 175 | - | 6,7 |



| Ref. | Dec. | 💡 | 🔌 | ∅ | ⏏ | 📏 | ⚖ | Kg |
|-------------|------|----|------------|-----|-----|---|----|----|
| 1 248D Lamp | BJ | 35 | E14 Led 5W | 120 | 128 | - | 30 | |

68



| Ref. | Dec. | 💡 | 🔌 | ∅ | ⌈ | ⌋ | Kg |
|-------------|------|----|------------|-----|----|---|-----|
| 1 248C Lamp | BP | 12 | E14 Led 5W | 100 | 88 | - | 9,5 |



1



2



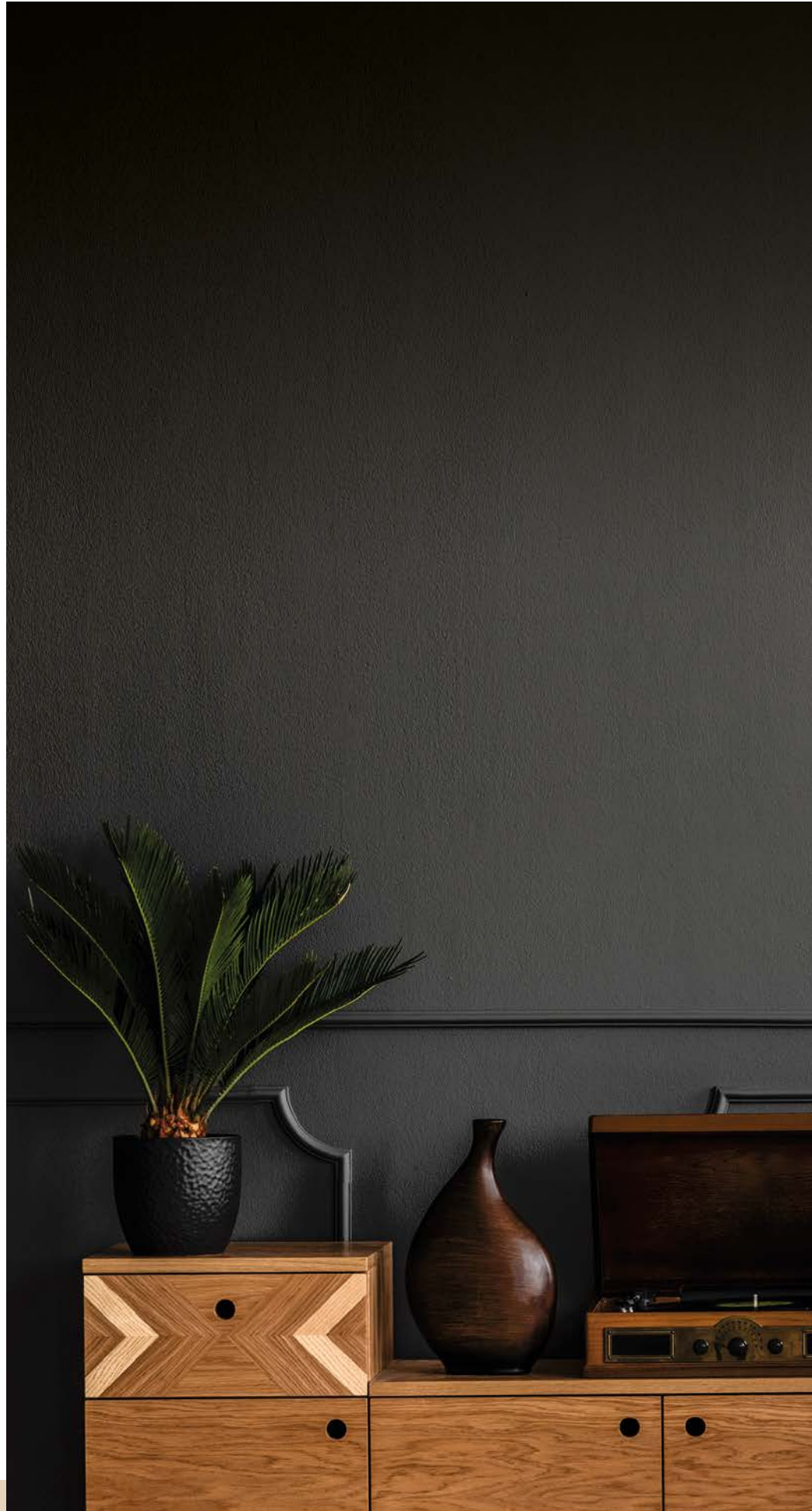
3



4

| Ref. | Dec. | ⚡ | 💡 | ∅ | ⊥ | ⊥ | Kg | |
|---------------|-----------|----|-------|------------|-------|----|-------|-------------|
| 1 248P | Wall Lamp | BP | 2/3 | E14 Led 5W | 60 | 40 | 32/34 | 1,3/1,7 |
| 2 248N | Wall Lamp | BJ | 1/2 | E14 Led 5W | 12/42 | 40 | 23/21 | 1/1,5 |
| 3 248A | Lamp | BJ | 3/5/6 | E14 Led 5W | 64 | 58 | - | 1,7/2,9/3,5 |
| 4 248B | Lamp | AH | 8/10 | E14 Led 5W | 100 | 70 | - | 6,7/8 |

70



| Ref. | Dec. | 💡 | 💡 | ∅ | I | H | Kg | Glass | |
|--------|------------|----|---|-------------|----|-----|----|-------|---|
| 1 746Y | Floor Lamp | CJ | 1 | E27 Led 10W | 38 | 172 | - | 11 | 1 |
| 2 746R | Table Lamp | CJ | 1 | E27 Led 10W | 40 | 63 | - | 3,1 | - |

Glass: 1 Acid with carving



71



| Ref. | Dec. | 💡 | 🔌 | ∅ | I | H | Kg | Glass | |
|--------|------|----|---|-------------|----|----|----|-------|---|
| 1 746A | Lamp | CJ | 6 | E27 Led 10W | 80 | 65 | - | 10 | 1 |

Glass: 1 Acid with carving

R Arena



72

| Ref. | Dec. | 💡 | 🔌 | ∅ | I | H | Kg | Glass | |
|--------|-----------|----|-----|-------------|-------|----|-------|-------|---|
| 1 746N | Wall Lamp | CJ | 1/2 | E27 Led 10W | 20/45 | 22 | 30/27 | 2/2,5 | 1 |
| 2 746E | Pendant | CJ | 3 | E27 Led 10W | 45 | 65 | - | 6 | 1 |

Glass: 1 Acid with carving



| Ref. | Dec. | 💡 | 🔌 | ∅ | ⊥ | ⊥ | Kg | Glass | |
|--------|--------------------|----|---|-------------|----|----|----|-------|---|
| 1 746H | Semi-flushed light | CJ | 6 | E27 Led 10W | 70 | 25 | - | 8 | 1 |
| 1 746J | Semi-flushed light | CJ | 4 | E27 Led 10W | 57 | 20 | - | 5 | 1 |
| 1 746K | Semi-flushed light | CJ | 3 | E27 Led 10W | 45 | 18 | - | 4 | 1 |

Glass: 1 Acid with carving

R Sevilla

74



The height of these items is with the crystal included

| | Ref. | | Dec. | 💡 | 🔌 | ∅ | I | H | Kg | Lamp shade | Crystal |
|---|-------------|------------|------|---|-------------|----|----|----|-----|------------|---------|
| 1 | 387R | Table Lamp | CQ | 1 | E27 Led 10W | 25 | 70 | - | 2,5 | 1 | 1 |
| 2 | 387N | Wall Lamp | CQ | 3 | E14 Led 5W | 35 | 34 | 23 | 3 | 1 | 1 |

Lamp shade: 1 White Crystal: 1 Asfour

Special lamp in project section



75

1

The height of these items is with the crystal included

| Ref. | Dec. | 💡 | 🔌 | ∅ | I | H | Kg | Lamp shade | Crystal | |
|--------|------|----|----|------------|-----|-----|----|------------|---------|---|
| 1 387C | Lamp | B0 | 30 | E14 Led 5W | 110 | 105 | - | 38 | 1 | 1 |

Lamp shade: 1 White Crystal: 1 Asfour

R Sevilla

76



1

The height of these items is with the crystal included

| Ref. | Dec. | 💡 | 🔌 | ∅ | I | H | Kg | Lamp shade | Crystal | |
|--------|------|----|----|------------|----|----|----|------------|---------------------|-------------------|
| 1 387B | Lamp | CQ | 15 | E14 Led 5W | 75 | 83 | - | 18 | 1 | 1 |
| | | | | | | | | | Lamp shade: 1 White | Crystal: 1 Asfour |

Special lamp in project section



77

1

The height of these items is with the crystal included





| Ref. | Dec. | 💡 | 🔌 | ∅ | I | H | Kg | Lamp shade | Crystal | |
|--------|------|----|---|------------|----|----|----|------------|---------------------|-------------------|
| 1 387A | Lamp | CQ | 6 | E14 Led 5W | 78 | 58 | - | 11 | 1 | 1 |
| | | | | | | | | | Lamp shade: 1 White | Crystal: 1 Asfour |

R Tamesis



78



| Ref. | Dec. |  |  | Ø |  |  | Kg |
|-------------|------|---|---|----|---|---|-------------|
| 1 007A Lamp | AA | 5/6/8 | E14 Led 5W | 62 | 40 | - | 4,2/4,7/5,7 |



1



4



2

3

| Ref. | Dec. | 💡 | 🔌 | ∅ | ⊥ | ⊥ | Kg | |
|--------|------------|----|-----|-------------|-------|-----|-------|---------|
| 1 007B | Lamp | AB | 3/5 | E14 Led 5W | 42 | 36 | - | 2,5/3,3 |
| 2 007R | Table Lamp | AA | 1 | E27 Led 10W | 25 | 46 | - | 0,6 |
| 3 007Y | Floor Lamp | AB | 1 | E27 Led 10W | 45 | 175 | - | 6,1 |
| 4 007N | Wall Lamp | AA | 1/2 | E14 Led 5W | 10/33 | 27 | 19/17 | 0,6/0,8 |

80



1



2



3



4

| Ref. | Dec. | Light | Socket | Ø | H | W | Kg | Ceramic | |
|---------------|------------|-------|--------|-------------|----|-----|----|---------|-------|
| 1 201B | Lamp | CB | 9 | E27 Led 10W | 97 | 103 | - | 27 | 1 / 2 |
| 2 201R | Table Lamp | AY | 1 | E27 Led 10W | 40 | 66 | - | 3 | 1 / 2 |
| 3 201S | Table Lamp | AY | 1 | E27 Led 10W | 30 | 47 | - | 2,2 | 1 / 2 |
| 4 201Y | Floor Lamp | AY | 1 | E27 Led 10W | 50 | 182 | - | 20 | 1 / 2 |



1

2

| Ref. | Dec. | ⚡ | 💡 | ∅ | I | H | Kg | Ceramic | |
|--------|-----------|----|---|-------------|----|----|----|---------|-------|
| 1 201N | Wall Lamp | AY | 1 | E27 Led 10W | 18 | 26 | 28 | 1,7 | 1 / 2 |
| 1 201P | Wall Lamp | AY | 2 | E27 Led 10W | 43 | 26 | 26 | 3,5 | 1 / 2 |
| 2 201A | Lamp | AY | 6 | E27 Led 10W | 77 | 64 | - | 14,5 | 1 / 2 |

Ceramic: 1 Cobalt / 2 Garnet

82



The height of these items is with the crystal included

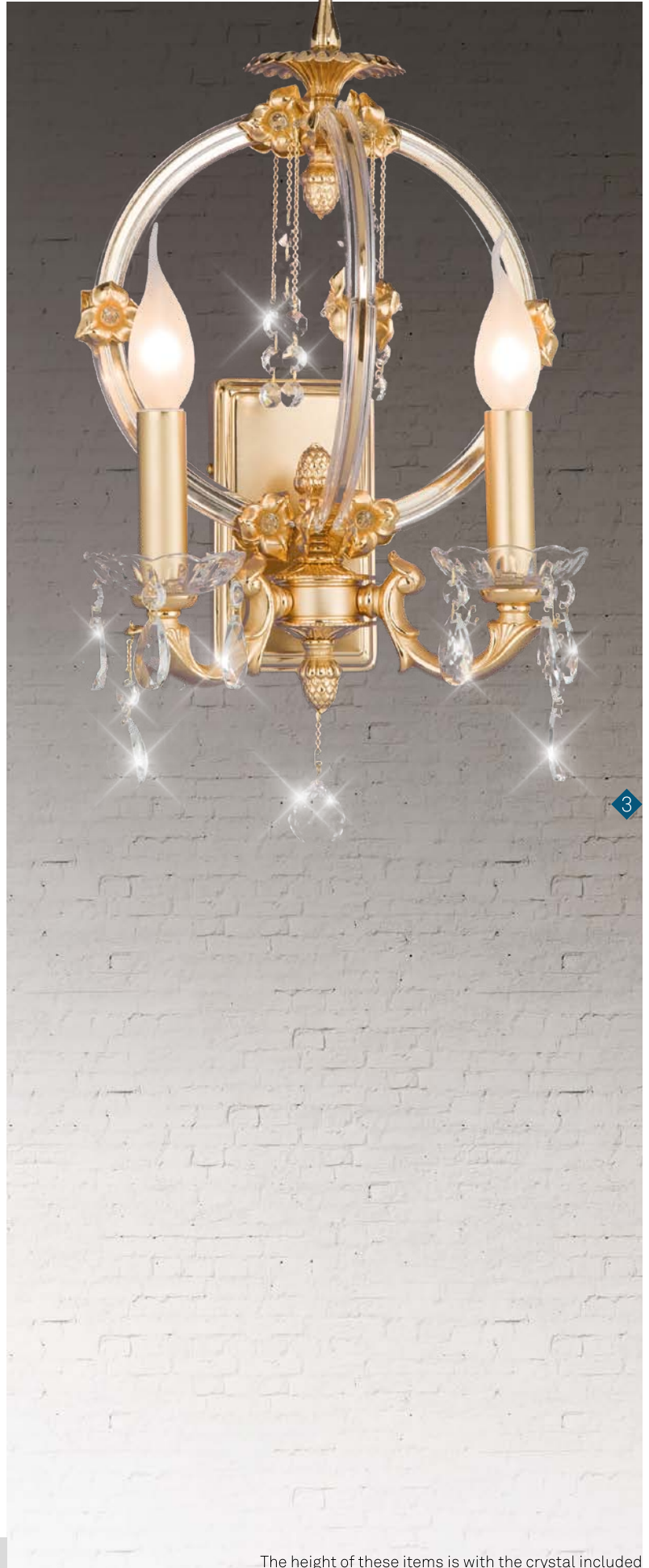
| Ref. | Dec. | 💡 | 🔌 | ∅ | ⊥ | ⊥ | Kg | Crystal | |
|--------|---------------|----|---|------------|----|----|----|---------|-------|
| 1 752K | Flushed light | JB | 3 | E14 Led 5W | 45 | 49 | - | 5,5 | 1 / 2 |
| 2 752E | Pendant | JB | 3 | E14 Led 5W | 41 | 69 | - | 7,5 | 1 / 2 |

Crystal: 1 Asfour / 2 Strass Swarovski



| Ref. | Dec. | 💡 | 🔌 | ∅ | ⚓ | ⏏ | Kg | Crystal | |
|--------|------|----|---|------------|----|----|----|---------|-------|
| 1 752A | Lamp | JB | 6 | E14 Led 5W | 73 | 84 | - | 13 | 1 / 2 |

Crystal: 1 Asfour / 2 Strass Swarovski



The height of these items is with the crystal included

| Ref. | Dec. | Light | Socket | Ø | I | H | Kg | Lamp shade | Crystal |
|--------|------------|-------|---------------|----|----|----|-----|------------|---------|
| 1 752S | Table Lamp | B0 | 1 E27 Led 10W | 25 | 61 | - | 2,7 | 1 / 2 | 1 / 2 |
| 2 752R | Table Lamp | B0 | 1 E27 Led 10W | 25 | 75 | - | 3 | 1 / 2 | 1 / 2 |
| 3 752N | Wall Lamp | B0 | 2 E14 Led 5W | 26 | 49 | 18 | 3,5 | - | 1 / 2 |

Lamp shade: 1 Gold / 2 Grey Crystal: 1 Asfour / 2 Strass Swarovski



85



| Ref. | Dec. | 💡 | 🔌 | ∅ | ↓ | ⚡ | Kg | Crystal |
|--------|---------------|---|------------|----|----|---|-----|---------|
| 1 752H | Flushed light | 3 | E14 Led 5W | 41 | 67 | - | 6,5 | 1 / 2 |

Crystal: 1 Asfour / 2 Strass Swarovski

R Minerva



1



2

86



3



4

| Ref. | Dec. | Light | Socket | Ø | H | W | Kg | Alabaster | |
|--------|-----------|-------|--------|------------|-------|-----|-------|-----------|---|
| 1 274N | Wall Lamp | AM | 1/2 | E14 Led 5W | 18/53 | 36 | 33/31 | 6/8 | 1 |
| 2 274B | Lamp | AM | 14 | E14 Led 5W | 110 | 120 | - | 39 | 1 |
| 3 274F | Pendant | AQ | 2 | E14 Led 5W | 38 | 100 | - | 15 | 1 |
| 4 274A | Lamp | AM | 8 | E14 Led 5W | 95 | 100 | - | 11 | 1 |

Alabaster: 1White

1



2



87

3



4



| Ref. | Dec. | Light | Socket | Ø | H | W | Kg | Alabaster | |
|--------|-----------|-------|--------|------------|-------|-----|-------|-----------|---|
| 1 277N | Wall Lamp | AM | 1/2 | E14 Led 5W | 18/55 | 20 | 34/32 | 8/10 | 1 |
| 2 277C | Lamp | AM | 22 | E14 Led 5W | 117 | 194 | - | 72 | 1 |
| 3 277B | Lamp | AM | 14 | E14 Led 5W | 117 | 120 | - | 42 | 1 |
| 4 277P | Wall Lamp | AM | 1 | E14 Led 5W | 36 | 18 | 18 | 3,5 | 1 |

Alabaster: 1White



| Ref. | Dec. | 💡 | 🔌 | ∅ | I | H | Kg | Lamp shade | Crystal | |
|--------|------|----|----|------------|----|----|----|-------------------------------|--|-------|
| 1 383A | Lamp | CQ | 11 | E14 Led 5W | 73 | 71 | - | 15 | 1 / 2 | 1 / 2 |
| | | | | | | | | Lamp shade: 1 White / 2 Black | Crystal: 1 Asfour / 2 Strass Swarovski | |



89



The height of these items is with the crystal included

| Ref. | Dec. | 💡 | 🔌 | ∅ | ⌈ | ⌋ | Kg | Crystal | |
|--------|---------|----|---|------------|----|----|----|---------|-------|
| 1 383E | Pendant | CQ | 5 | E14 Led 5W | 48 | 71 | - | 9,3 | 1 / 2 |

Crystal: 1 Asfour / 2 Strass Swarovski

90



1



2



3

| Ref. | Dec. | ⚡ | 🔌 | ∅ | ⊥ | ⊥ | Kg | Lamp shade | Crystal | |
|--------|------------|----|---|------------------------------|----|----|----|------------|---------|-------|
| 1 383R | Table Lamp | CQ | 3 | 2 E14 Led 5W & 1 E27 Led 10W | 40 | 70 | - | 4 | 1 / 2 | 1 / 2 |
| 2 383S | Table Lamp | CQ | 1 | E27 Led 10W | 25 | 38 | - | 1,5 | 1 / 2 | 1 / 2 |
| 3 383P | Wall Lamp | CQ | 2 | 1 E14 Led 5W & 1 E27 Led 10W | 40 | 75 | 31 | 3,6 | 1 / 2 | 1 / 2 |

Lamp shade: 1 White / 2 Black Crystal: 1 Asfour / 2 Strass Swarovski



1



2

The height of these items is with the crystal included

| Ref. | Dec. | 💡 | 🔌 | ∅ | ⌈ | ⌋ | Kg | Lamp shade | Crystal | |
|---------------|---------------|----|-----|------------|-------|----|-------|------------|---------|-------|
| 1 383N | Wall Lamp | CQ | 1/2 | E14 Led 5W | 16/26 | 44 | 15/13 | 1,2/1,7 | 1 / 2 | 1 / 2 |
| 2 383H | Flushed light | CQ | 3 | E14 Led 5W | 48 | 37 | - | 6 | - | 1 / 2 |






Lamp shade: 1 White / 2 Black Crystal: 1 Asfour / 2 Strass Swarovski

R Versalles



92

1

| Ref. | Dec. |  |  |  |  |  | Kg |
|-------------|------|---|---|---|---|---|---------|
| 1 009A Lamp | AY | 6/8 | E14 Led 5W | 56 | 44 | - | 6,4/7,9 |



| Ref. | Dec. | 💡 | 🔌 | ∅ | ⊥ | ⊥ | Kg | |
|---------------|------------|----|-----|-------------|-------|-----|-------|-------|
| 1 009B | Lamp | AB | 3/5 | E14 Led 5W | 42 | 39 | - | 3/4 |
| 2 009Y | Floor Lamp | AY | 1 | E27 Led 10W | 45 | 176 | - | 6 |
| 3 009R | Table Lamp | AB | 1 | E27 Led 10W | 30 | 53 | - | 1,5 |
| 4 009N | Wall Lamp | AB | 1/2 | E14 Led 5W | 10/33 | 27 | 19/17 | 0,7/3 |

R Catherina



94



| Ref. | Dec. | Light | Socket | Ø | H | W | Kg | Glass | |
|--------|-----------|-------|--------|-------------|----|----|----|-------|-------|
| 1 751N | Wall Lamp | EA | 1 | E27 Led 10W | 20 | 35 | 26 | 3 | 1 / 2 |
| 2 751D | Lamp | EA | 4 | E27 Led 10W | 68 | 60 | - | 10 | 1 / 2 |

Glass: 1 Acid / 2 Amber



| Ref. | Dec. |  |  | \varnothing | \pm |  | Kg | Glass | |
|--------|------|---|---|---------------|-------|---|----|-------|-------|
| 1 751B | Lamp | EA | 9 | E27 Led 10W | 100 | 68 | - | 19 | 1 / 2 |

Glass: 1 Acid / 2 Amber

R Catherina



96



| Ref. | Dec. | 💡 | 🔌 | ∅ | ⌈ | ⌋ | Kg | Glass | |
|--------|------|----|----|-------------|-----|----|----|-------|-------|
| 1 751C | Lamp | JB | 10 | E27 Led 10W | 100 | 68 | - | 20 | 1 / 2 |
| 2 751A | Lamp | JB | 6 | E27 Led 10W | 81 | 58 | - | 13 | 1 / 2 |

Glass: 1 Acid / 2 Amber



| Ref. | Dec. | ⚡ | 💡 | ∅ | ⊥ | ⊥ | Kg | Lamp shade |
|--------|---------|----|---|-------------|-----|----|----|------------|
| 1 751E | Pendant | EA | 5 | E27 Led 10W | 270 | 73 | - | 1 |
| 2 751F | Pendant | EA | 3 | E27 Led 10W | 122 | 73 | - | 1 |

Lamp shade: 1 Beige

R Artemis



1

98



2



| Ref. | Dec. | Light | Socket | Ø | H | W | Kg | Lamp shade | Crystal | |
|--------|------------|-------|--------|------------|-----|----|----|------------|---------|-------|
| 1 743N | Wall Lamp | EA | 2 | E14 Led 5W | 45 | 58 | 32 | 2,3 | 1 / 2 | 1 / 2 |
| 2 743R | Table Lamp | CX | 2 | E14 Led 5W | 45 | 73 | - | 3,25 | 1 / 2 | 1 / 2 |
| 3 743D | Lamp | BO | 21 | E14 Led 5W | 120 | 90 | - | 35 | - | 1 / 2 |

Lamp shade: 1 Cream / 2 Black

Glass & crystal drops: 1 Lilac / 2 Fume



R Artemis

100



| Ref. | Dec. | Light | Socket | Ø | H | W | Kg | Lamp shade | Crystal | |
|--------|------------|-------|--------|------------|----|-----|----|------------|---------|-------|
| 1 743Y | Floor Lamp | EA | 2 | E14 Led 5W | 45 | 176 | - | 8,1 | 1 / 2 | 1 / 2 |
| 2 743A | Lamp | CX | 6 | E14 Led 5W | 78 | 64 | - | 7 | - | 1 / 2 |

Lamp shade: 1 Cream / 2 Black

Glass & crystal drops: 1 Lilac / 2 Fume